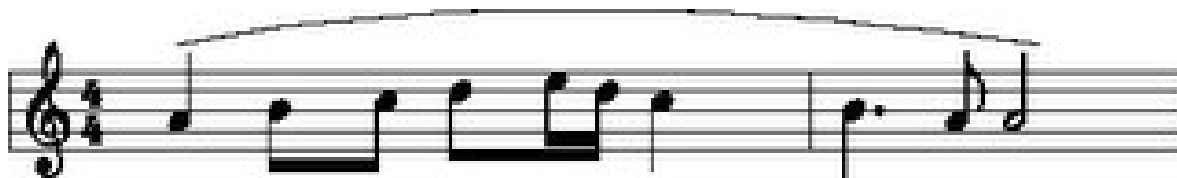
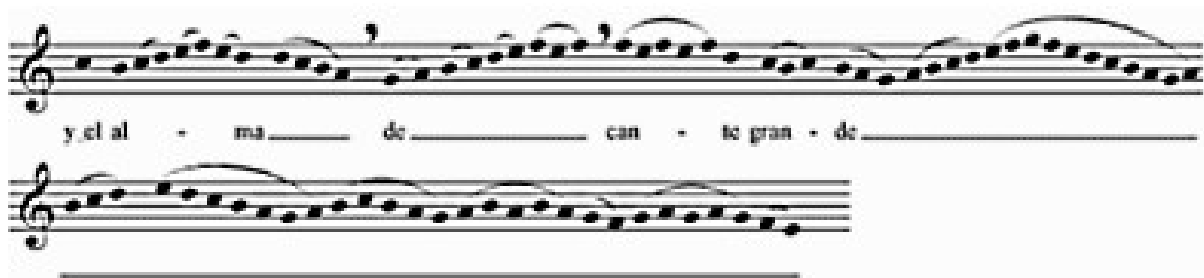


SIGNOS DE FRASEO Y ARTICULACIÓN

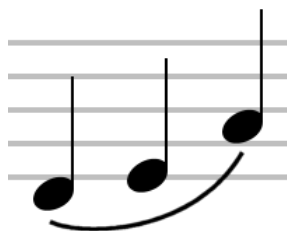
Ligadura de fraseo: Indica que la interpretación debe ser ligada.



Apóstrofe o coma: breve pausa para respirar.



Legato: Abarca dos o más notas e indica deben interpretarse sin articular una separación del sonido.



Picado: Punto colocado encima de las notas debe interpretarse acortando su duración.



Staccato: Se indica con un acento vertical sobre las notas y se interpreta atacando la nota de forma energética.

Moderato. **Etude for Staccato Playing.**

The image shows a musical score for a piece titled "Etude for Staccato Playing" in 2/4 time, marked "Moderato." The score is written for piano and consists of three systems of two staves each (treble and bass clef). The music is characterized by staccato notes, indicated by vertical accents above the notes. The piece features a variety of rhythmic patterns and fingerings, with numbers 1-5 placed above or below notes to indicate the left hand. The first system contains 8 measures, the second system contains 8 measures (including a "rit." marking), and the third system contains 8 measures. The piece concludes with a double bar line.