

Title:	Emergency Interventions	Page 1 of 3
Policy No:	2 CC 208	Approval Date 10/28/2005

#### OBJECTIVE

To ensure the consistent provision of care for patients requiring emergency interventions.

#### SCOPE

RNs with Critical Care skills and education related to this policy.

#### POLICY

1. This clinical policy has been accepted as the Standard of Practice for the Detroit Medical Center to ensure the consistent provision of patient care. See CC 100 Critical Care Provisions of Care and CC 204 Cardioversion, Elective and Emergent.
2. If Progressive Care nurses have not taken Advance Cardiac Life Support (ACLS), the DMC Tier 2 PCD Emergency Protocol is followed.
3. House physicians/designee are paged STAT for all emergencies.

#### PROVISIONS

1. In the absence of a physician, the RN initiates the following emergency interventions based on the American Heart Association (AHA), ACLS algorithms. See attached appendixes. The following AHA ACLS algorithms have been modified to include nursing interventions and settings related to Transcutaneous Pacing (TCP).
  - a. Universal algorithm
  - b. Ventricular fibrillation (VF) and Pulseless Ventricular tachycardia (VT)
  - c. Asystole
  - d. Pulseless Electrical Activity (PEA)
  - e. Bradycardia
  - f. Unstable Ventricular Tachycardia Overview
2. In the absence of a physician, the RN initiates the following interventions for patients in Acute Respiratory Distress.
  - a. For non-mechanically ventilated patients.
    - i. Open airway using head tilt chin lift method.
    - ii. If patient is breathing, apply non-rebreather mask at 100%.
    - iii. If patient is unresponsive and not breathing, ventilate patient with Manual Resuscitation Bag (MRB) with mask using 100% oxygen until anesthesia/physician arrives. Insert oral or nasal pharyngeal airway if needed. Assess for chest expansion during ventilation.
    - iv. Page anesthesia, physician, and respiratory therapy STAT.
  - b. For mechanically ventilated patients.
    - i. Disconnect and manually ventilate with MRB using 100% oxygen.
    - ii. Page respiratory therapy and anesthesia STAT if indicated.
  - c. Assess airway patency, breath sounds, chest expansion, endotracheal tube (ET) placement, tracheal position, ET balloon integrity, pulse oximetry, and arterial blood gases as needed.
  - d. If inadequate ventilation occurs due to dislodged ET tube:

Title:	Emergency Interventions	Page 2 of 3
Policy No:	2 CC 208	Approval Date 10/28/2005

- i. Page respiratory therapy, anesthesia, and physician STAT and ventilate using 100%.
  - ii. If patient stable, wait for anesthesia and / or physician.
  - iii. If patient unstable, and unable to ventilate with ET secondary to obstruction or ET tube in esophagus, remove ET and ventilate with MRB with mask using 100%.
- e. If inadequate ventilation occurs due to a suspected mucous plug:
- i. Page respiratory therapy, anesthesia and physician STAT while suctioning patient.
  - ii. If patient continues to deteriorate, or becomes unstable, and unable to ventilate with ET, remove ET and ventilate with MRB with mask using 100%.
- f. If inadequate ventilation occurs due to loss of ET balloon integrity:
- i. Page respiratory, anesthesia, and physician STAT.
  - ii. Attempt to maintain ventilation through ET with MRB using 100% oxygen.
  - iii. If patient decompensates despite attempts to ventilate through ET:
    - (1) Prepare for reintubation.
    - (2) Consider obtaining ET tube exchanger (where available).
    - (3) Remove ET tube and ventilate with MRB with mask using 100% oxygen.
    - (4) Insert oral pharyngeal airway if needed.
    - (5) Follow-up - obtain Arterial Blood Gases and pulse oximetry.

**DOCUMENTATION**

Critical Care Flow Sheet, Code Blue form, and/or Progress Notes.

- Copies of the code blue documentation form are sent to pharmacy and appropriate departments after completion.

**EQUIPMENT:**

HOSPITAL	DRH	SINAI-GRACE	HARPER	HUTZEL	HVSH	MIOSH
Devices	HP CodeMaster XL	Physiocontrol Lifepak 9 & 12	HP CodeMaster XL	HP CodeMaster XL	HP CodeMaster XL	HP CodeMaster XL Lifepak
Crash Cart Availability	During transcutaneous pacing (TCP), contact another ICU for back up CodeMaster with pacing capability.	Back up available on other Critical Care units.	During TCP contact 4 ICU and 9ICU for extra CodeMaster. If in use or unavailable, call CPD and ask for Crash Cart back up with pacing capabilities.	Back up CodeMaster available in ED	Back up available on unit.	Back up CodeMaster available in ED
Progressive Level of Care		Progressive Level of Care Unit available				

Title:	Emergency Interventions	Page 3 of 3
Policy No:	2 CC 208	Approval Date 10/28/2005

APPENDIX  
Appendix A-F

REFERENCES

Wiegand, D.J.L. and Carlson, K.K. (eds.)(2005). AACN Procedure Manual for Critical Care 5th ed. Philadelphia: Elsevier.

American Heart Association Advanced Cardiac Life Support, October 2000. JAMA supplement.

See Appendix A through F

*Algorithms courtesy of American Heart Association Advance Life Support Provider Manual 2000.*

ADMINISTRATIVE RESPONSIBILITY

The Chief Nursing Officer has overall responsibility and authority for the administration of all policies, procedures and guidelines related to patient care.

APPROVAL SIGNATURE(S)

\_\_\_\_\_  
Chief Nursing Officer  
Detroit Medical Center

\_\_\_\_\_  
Date

REVIEW DATE:  
10/28/2008

SUPERSEDES:  
10/28/2002

LEVEL OF EDUCATION - II

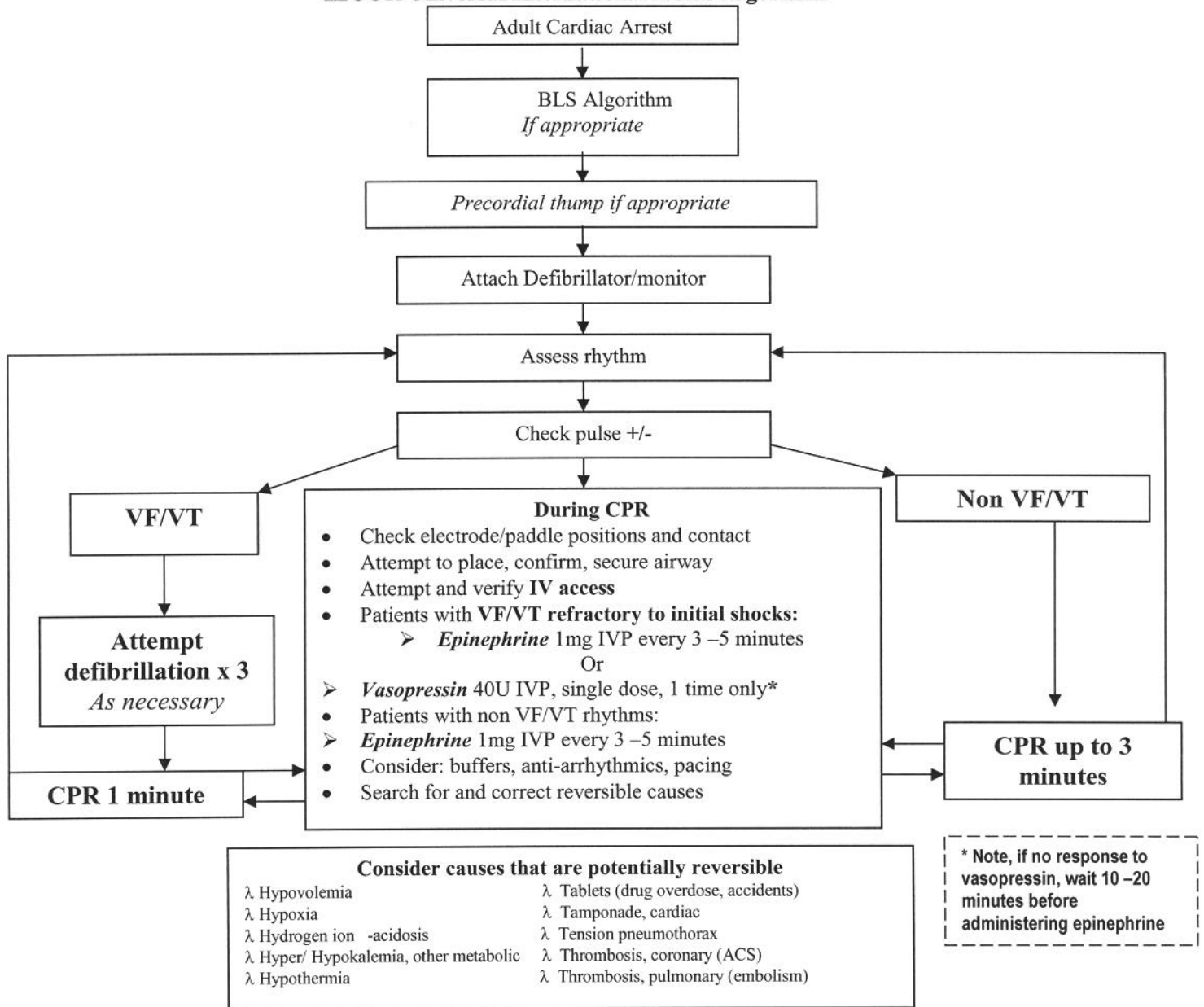
KEY Search Words:  
Emergency Interventions  
ACLS

Please check one:

This policy is: New    Reviewed    Revised

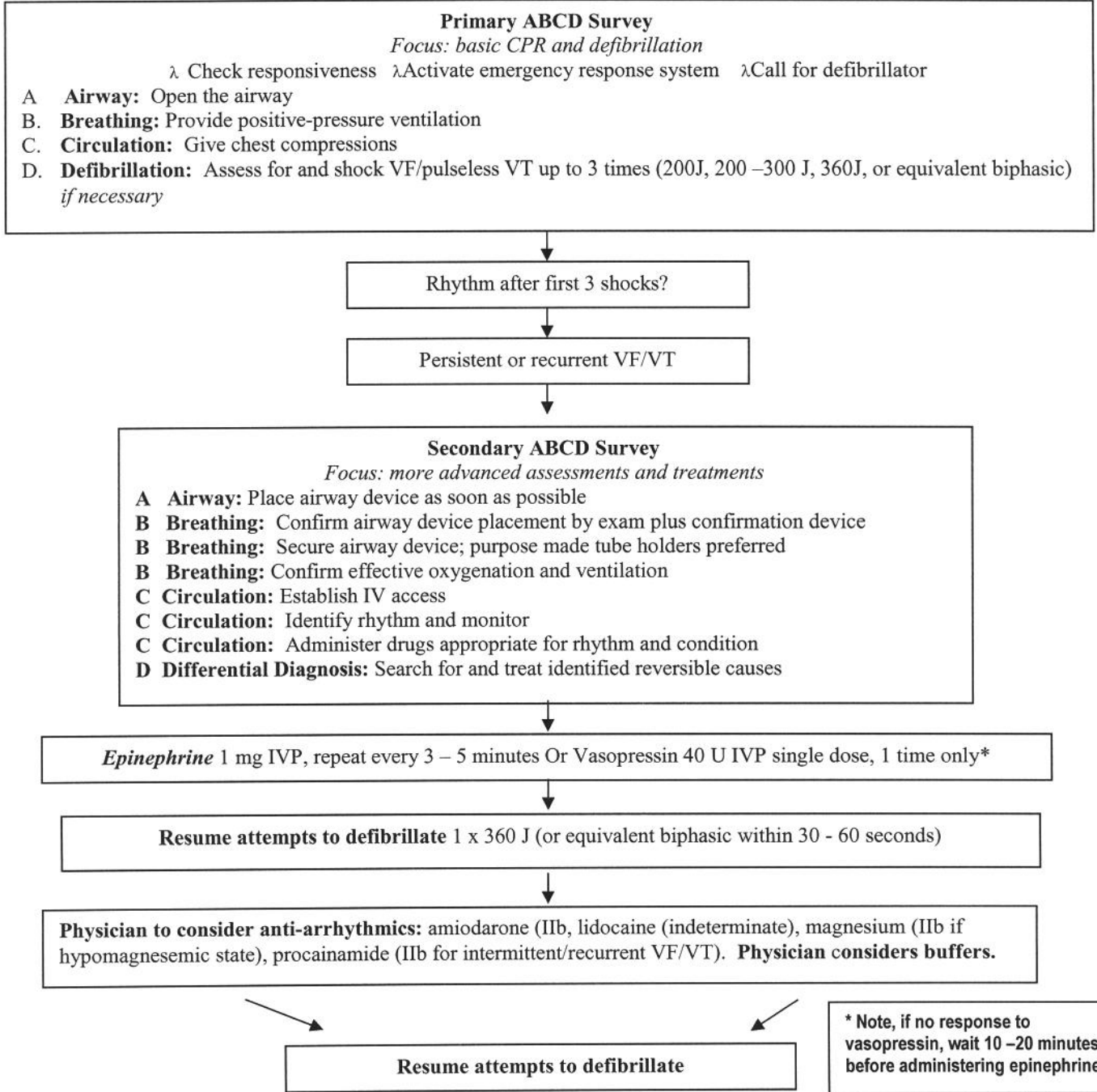
Title:	Emergency Interventions	Page 1 of 6
Policy No:	2 CC 208	Approval Date 03/31/2005

**Appendix A**  
**ILCOR Universal/International ACLS Algorithm**



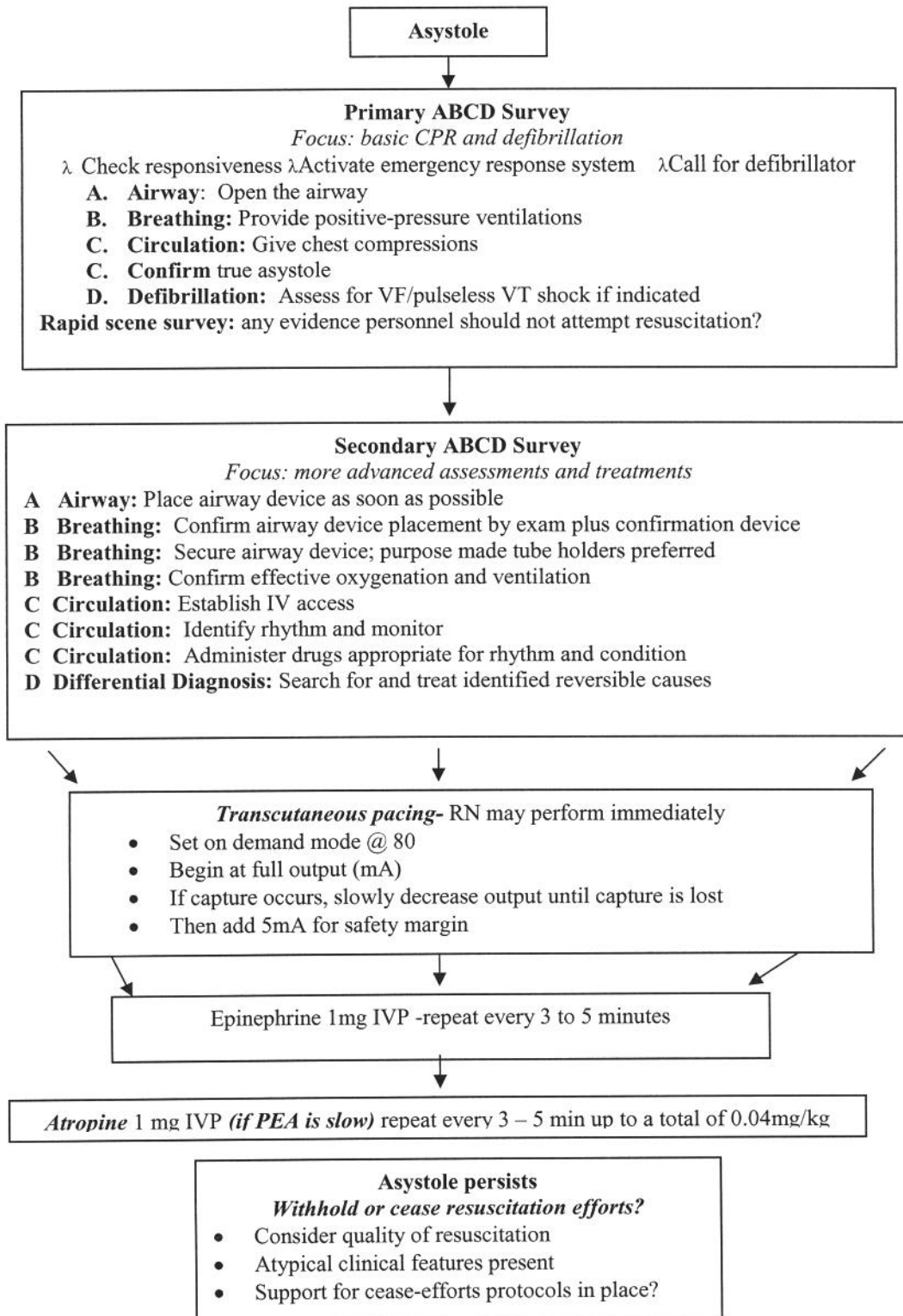
Title:	Emergency Interventions	Page 2 of 6
Policy No:	2 CC 208	Approval Date 03/31/2005

**Appendix B**  
**Ventricular Fibrillation/Pulseless VT Algorithm**



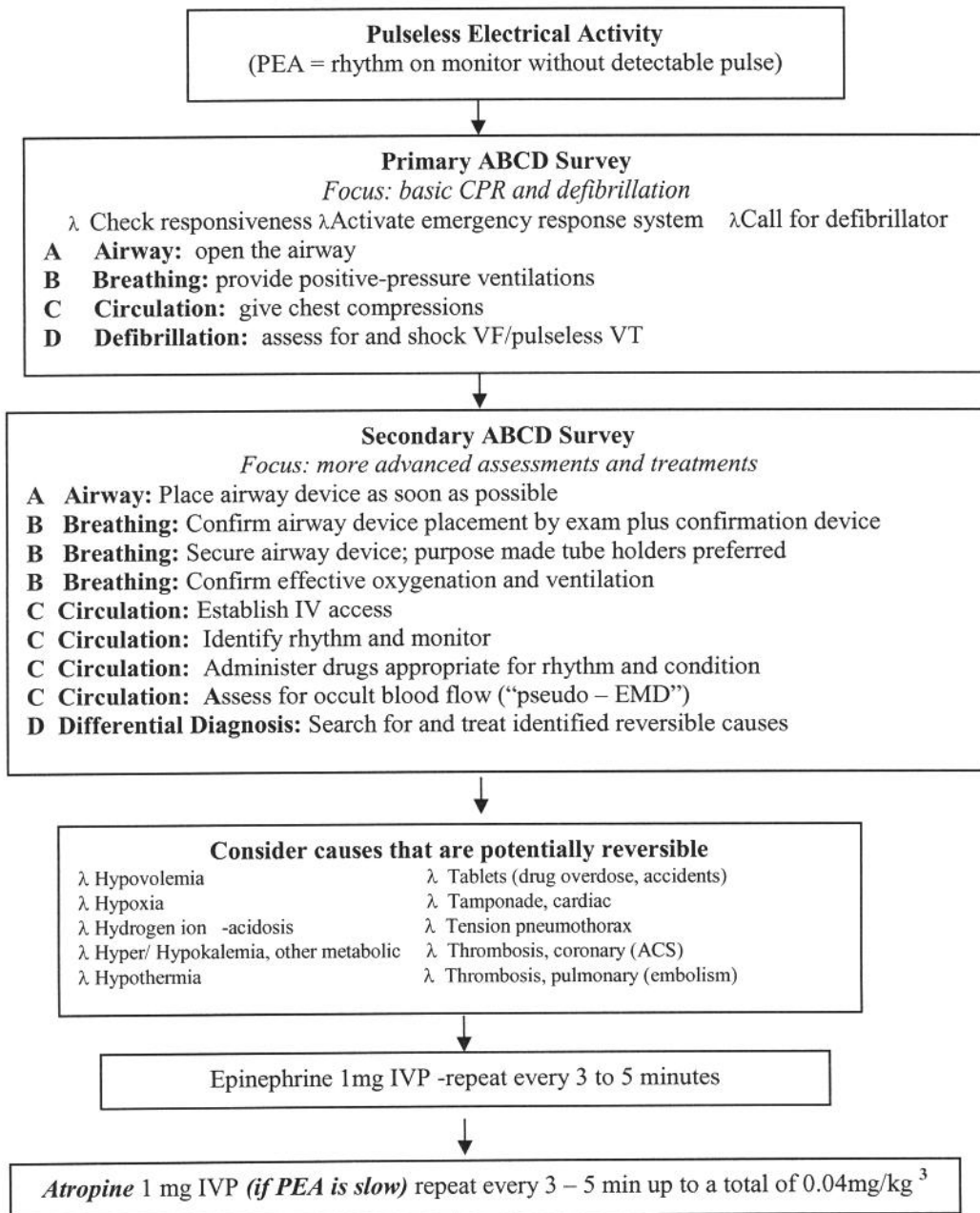
Title:	Emergency Interventions	Page 3 of 6
Policy No:	2 CC 208	Approval Date 03/31/2005

**Appendix C**



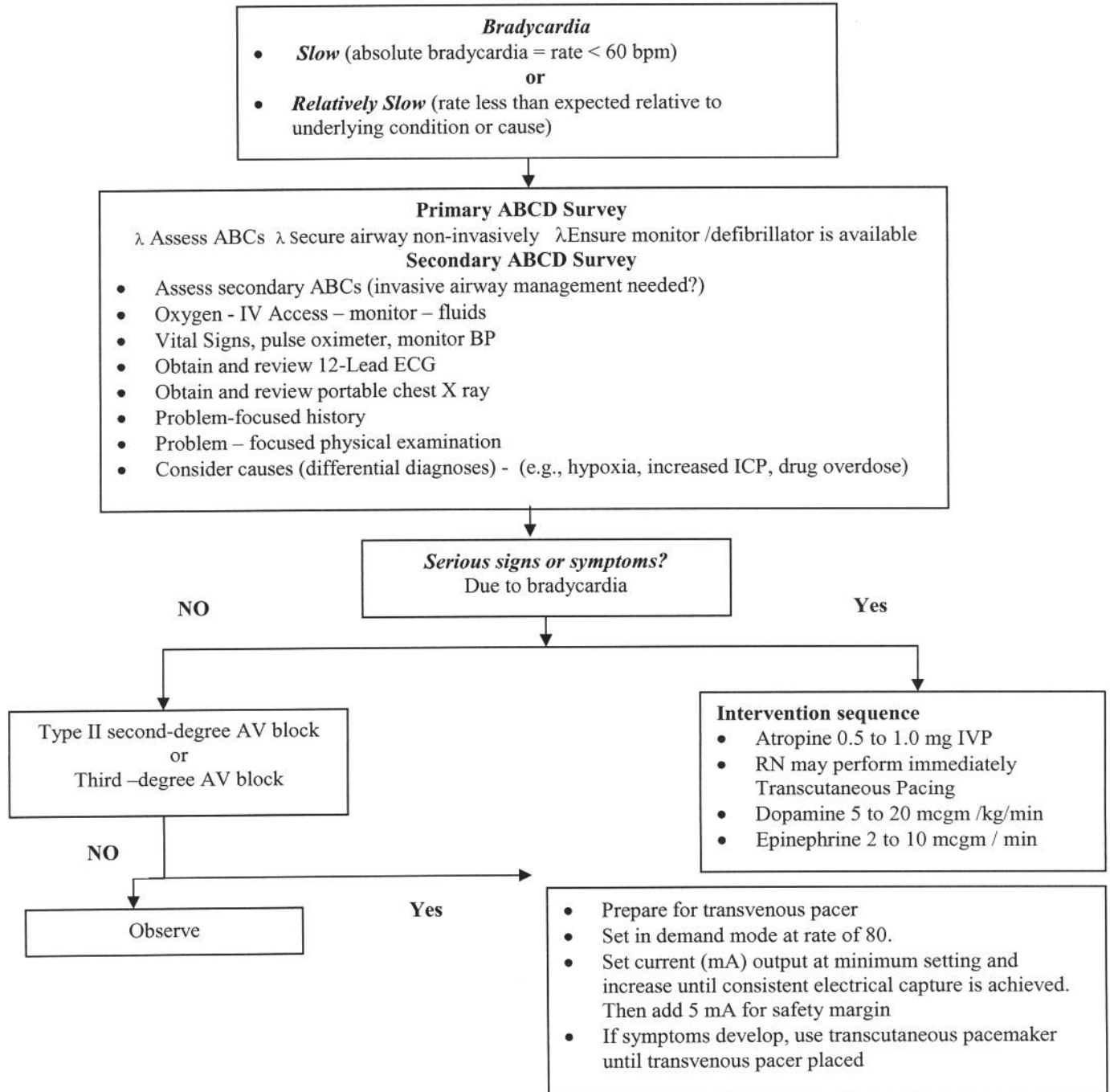
Title:	Emergency Interventions	Page 4 of 6
Policy No:	2 CC 208	Approval Date 03/31/2005

**Appendix D**  
**Pulseless Electrical Activity Algorithm**



Title:	Emergency Interventions	Page 5 of 6
Policy No:	2 CC 208	Approval Date 03/31/2005

**Appendix E**  
**Bradycardia**





Title:	Emergency Interventions	Page 6 of 6
Policy No:	2 CC 208	Approval Date 03/31/2005

**Appendix F**  
**Unstable Ventricular Tachycardia Overview**

**UNSTABLE VENTRICULAR TACHYCARDIA**

- Serious signs and symptoms:
    - ◆ Chest pain
    - ◆ Hypotension
    - ◆ Change in LOC
    - ◆ SOB
    - ◆ Symptoms of CHF
  - Establish that rapid heart rate is cause of symptoms
  - Rate related symptoms usually occur at rates > 150bpm
  - ***Immediately cardiovert @ 100J, 200J, 300J, 360J***
- Refer to policy CC 204 Cardioversion, Elective and Emergent**