

Name: _____

ASSESSMENT QUESTIONS June 2007

Answer the following questions from the *Code Blue Website* located at:

“Code Blue” on the Harper Pharmacy website

Then, indicate on the concept map the question number where you found the answer.

1. Where do you find the crash cart on 2WN?

2. If ST segment means plateau phase of the ECG waveform, what does U wave mean?

3. What 2 syringes do you automatically assemble at the start of a code blue emergency?

4. How many ml/hr do you run an isoproterenol drip if the dose is 6 mcg/min and the concentration is 1 mg/250 ml?

5. What journal was the article *Clinical Pharmacy Services and Hospital Mortality Rates* published in?

6. What is the last item listed in drawer 2 of the Harper crash cart supply list?

7. Which policy, Tier 1 or Tier 2, has the objective: *To ensure the consistent provision of care for patients requiring emergency interventions?*

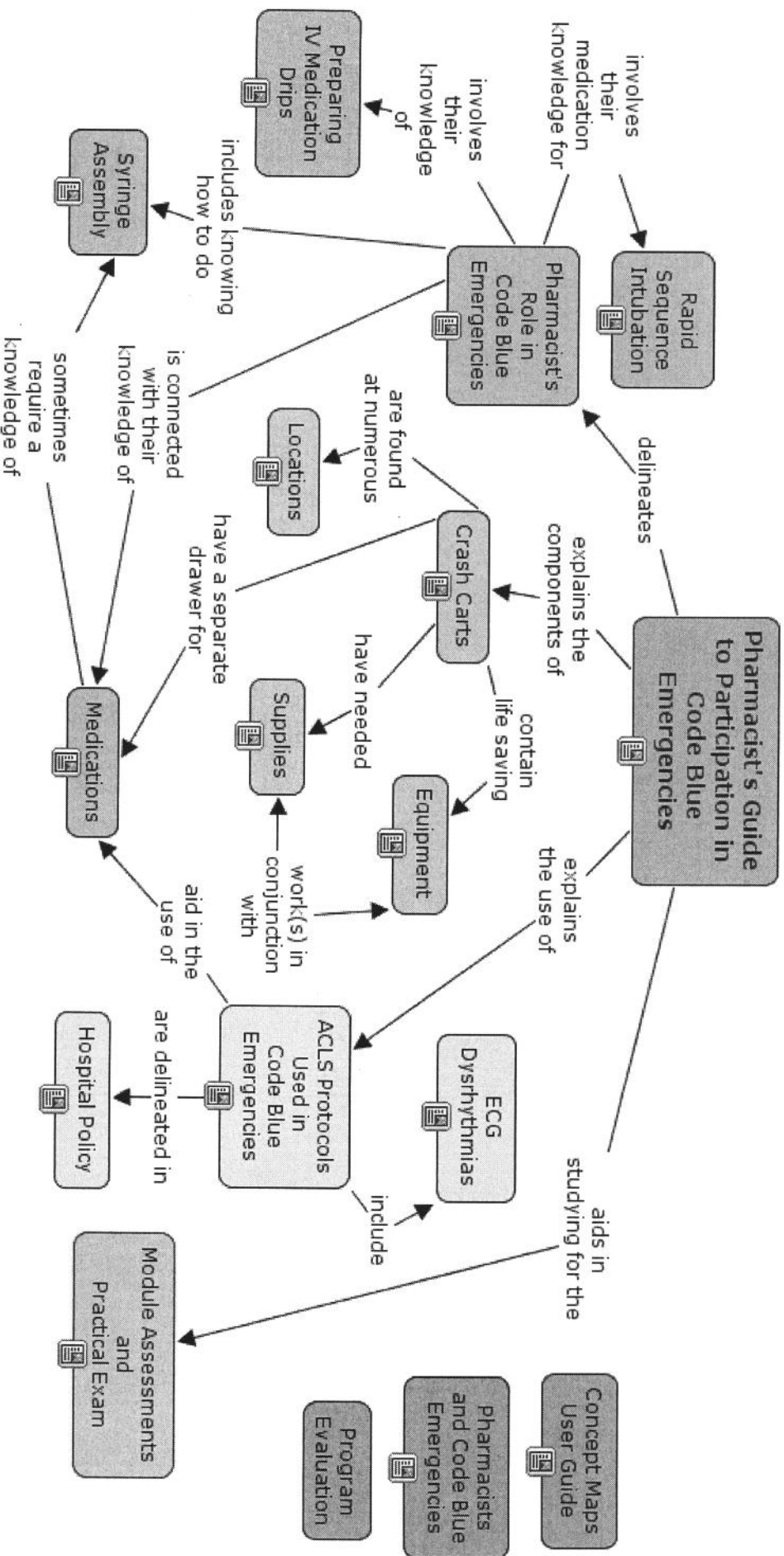
8. Which concept has an online link to *acls.net*?

9. Where is the study guide (helpful hints) for the practical assessment?

10. What is the dosage range for midazolam given for sedation prior to RSI?

Directions: Complete the questions front and back. Turn in your answers to Dale Tucker when you do your practical assessment.

Pharmacist's Guide to Participation in Code Blue Emergencies



This Concept Map was created with
IHMC CmapTools

