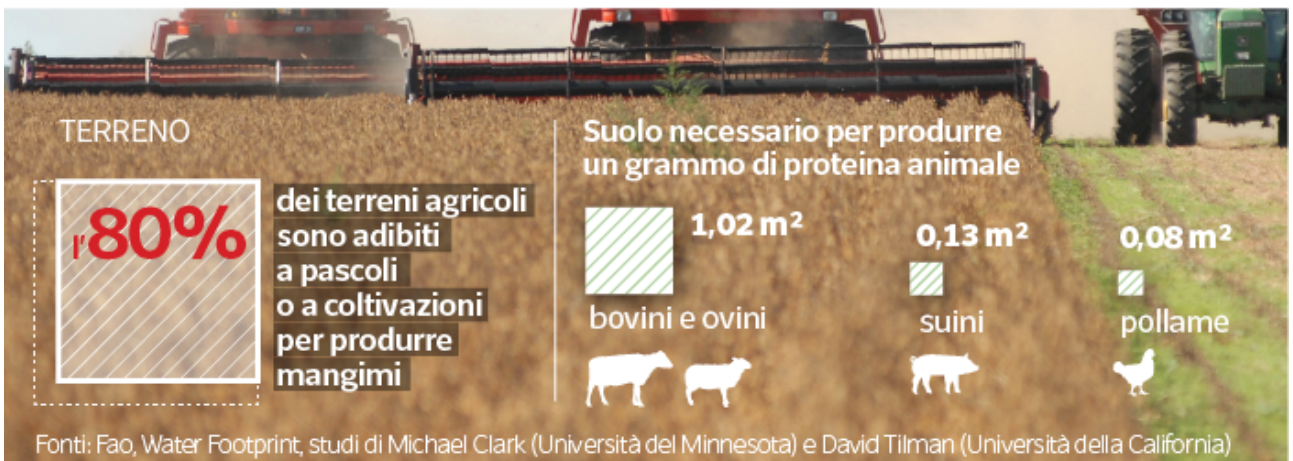
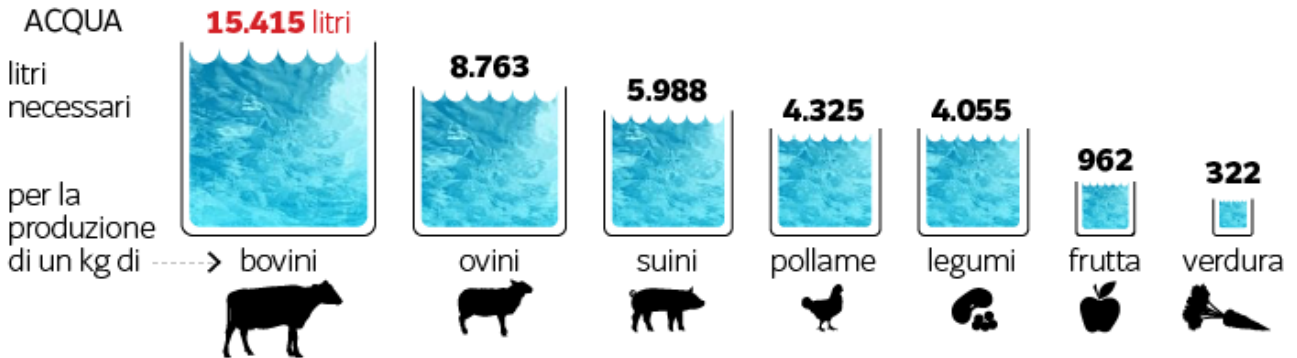
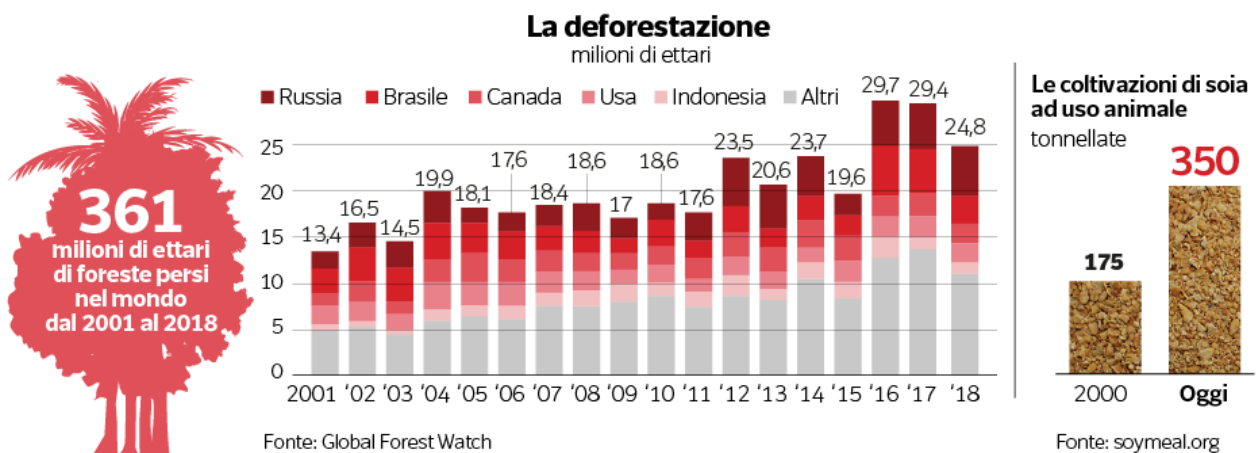


L'impatto sul pianeta



(fig.1)



(fig.2)

La crescita in 60 anni

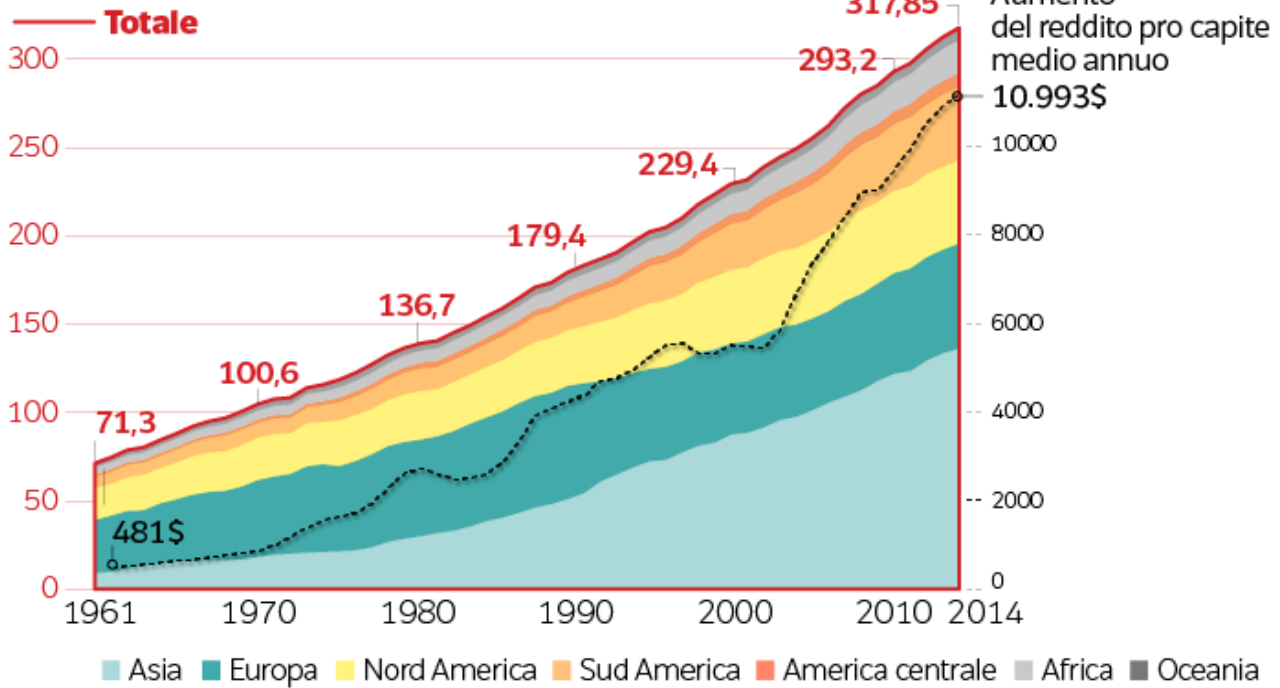
Consumo di carne pro capite annuo



2015



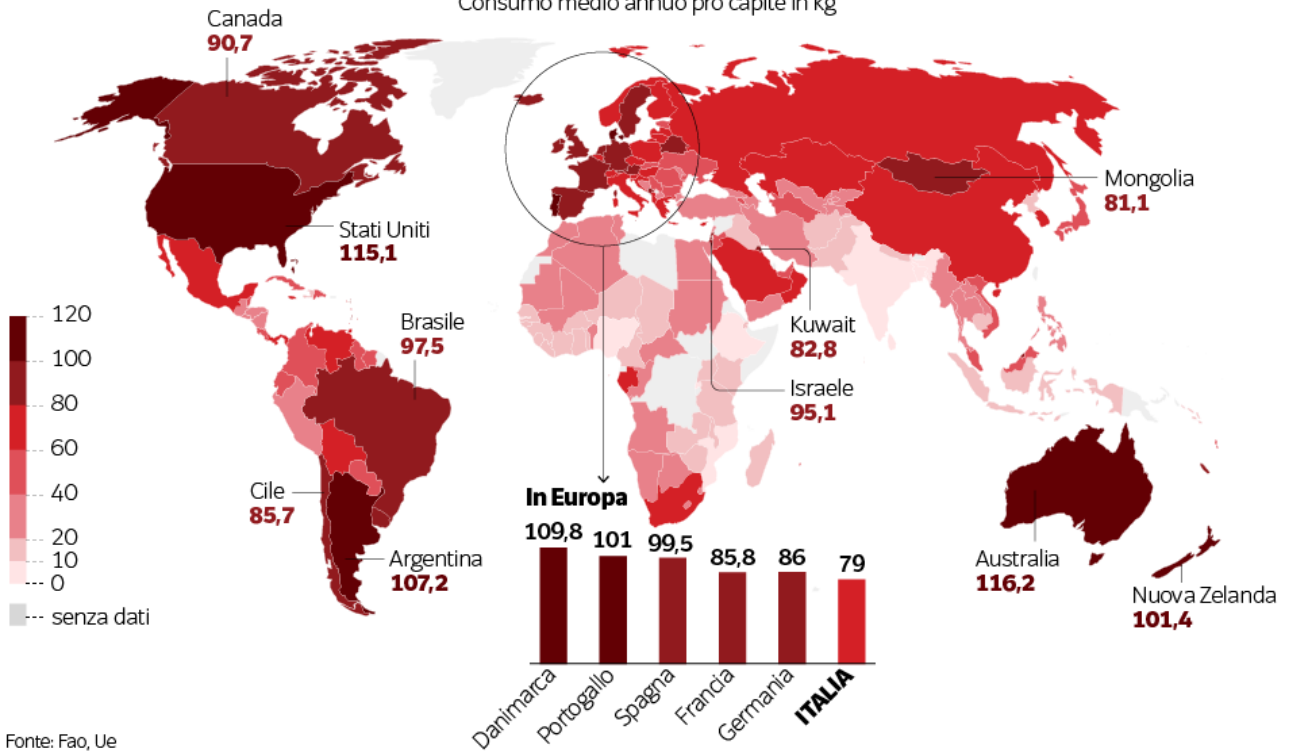
Consumo mondiale (milioni di tonnellate)



Fonte: Fao, Banca mondiale
(fig.3)

Chi consuma più carne

Consumo medio annuo pro capite in kg

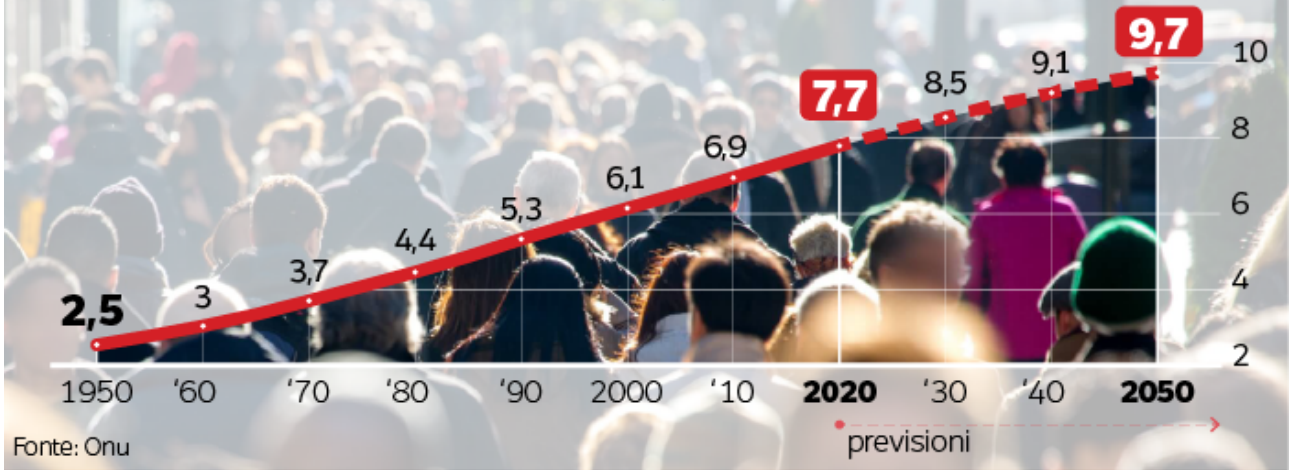


Fonte: Fao, Ue

(fig.4)

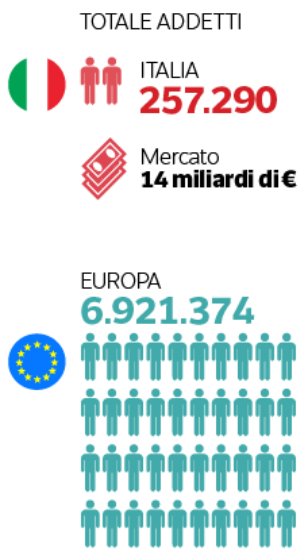
La popolazione mondiale

miliardi di persone

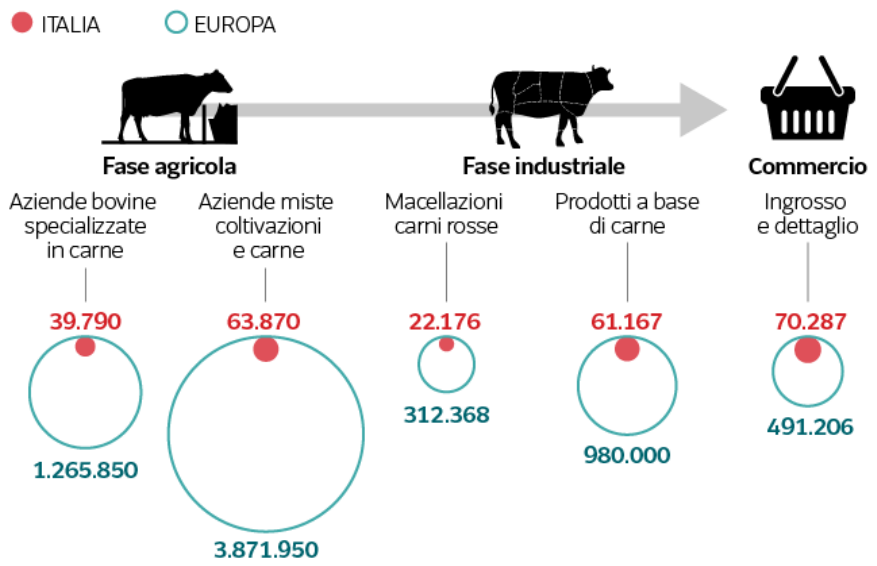


Fonte: Onu

previsioni



Gli occupati nella filiera



Fonti: Ismea su dati Eurostat, Assocarni (fig.5)