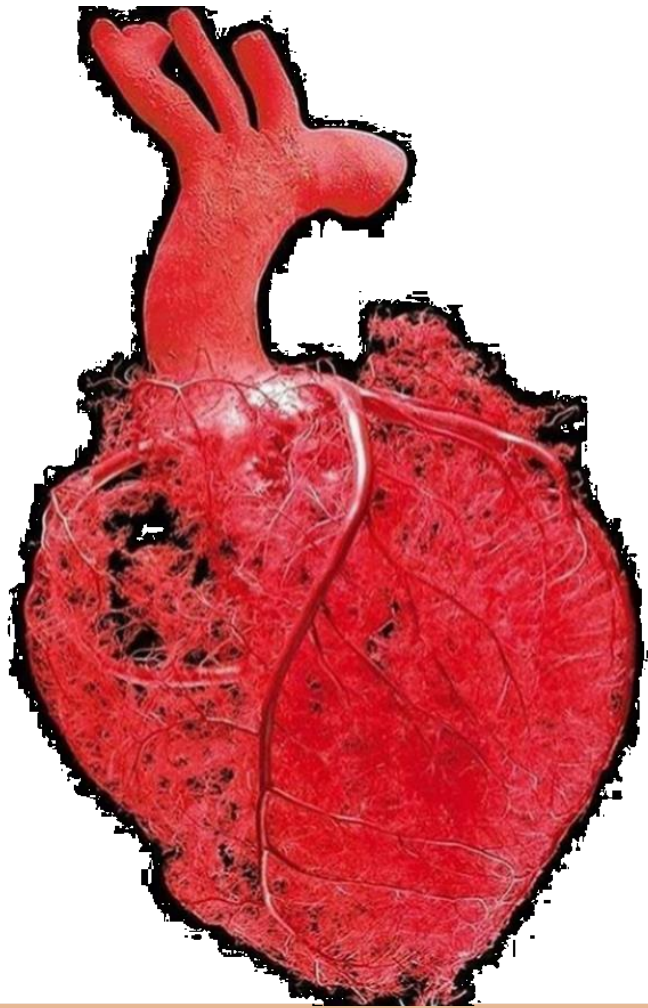


Kinesiología

Sistema cardiovascular

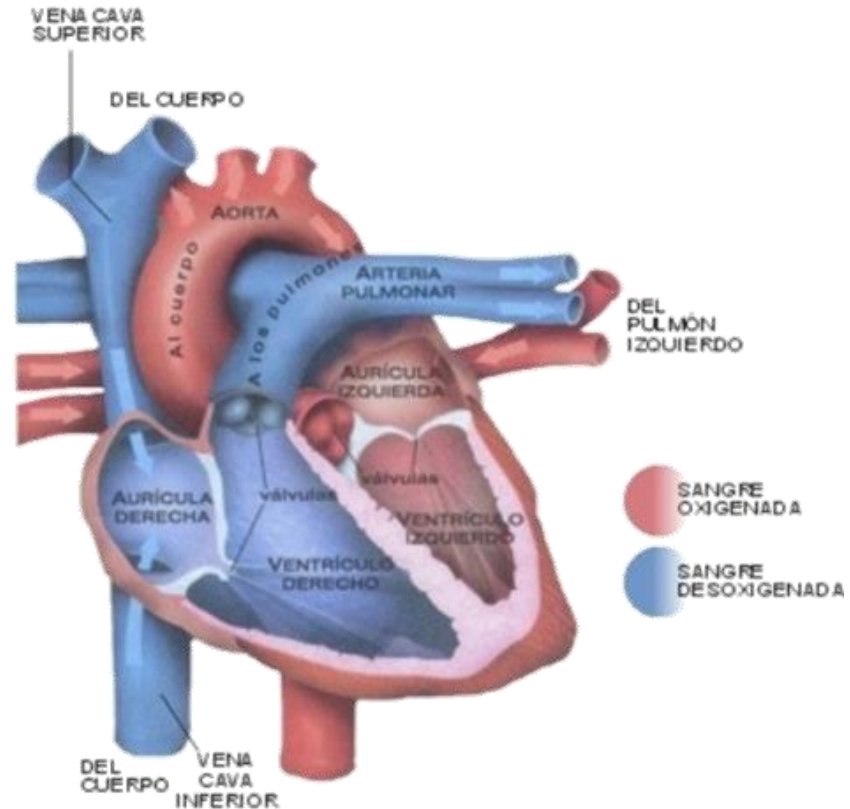


UNIVERSIDAD DE LAS AMERICAS

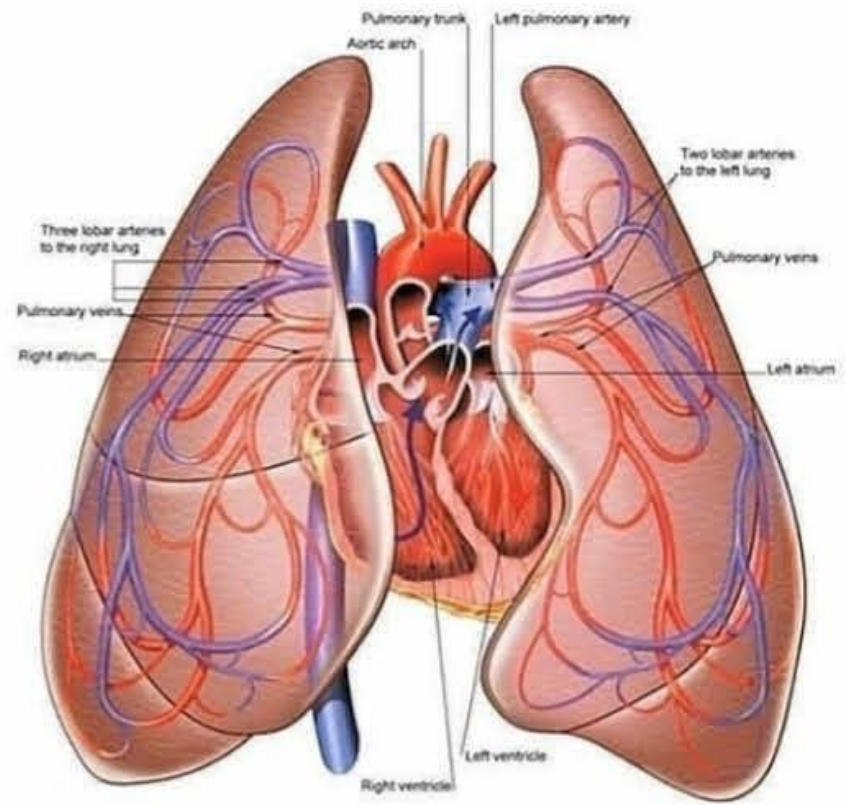


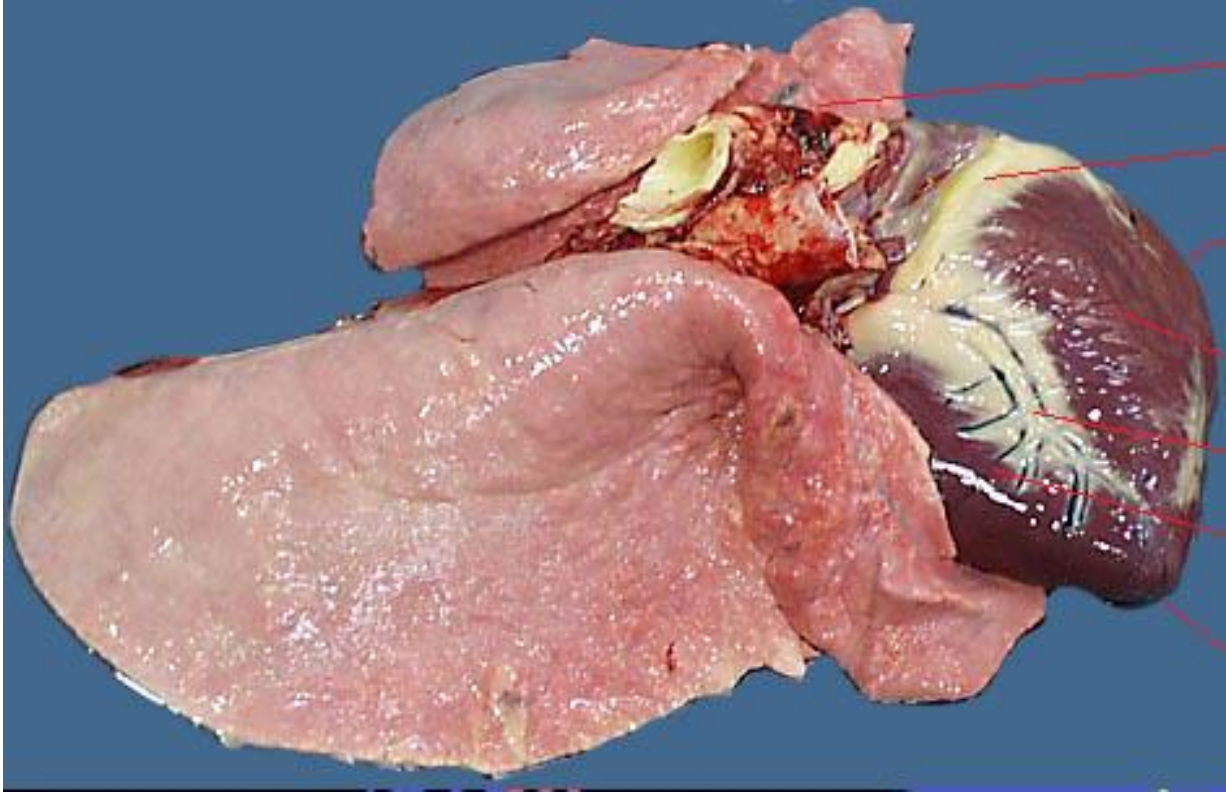
GENERALIDADES

- El corazón es un músculo hueco que desempeña la función de una doble bomba



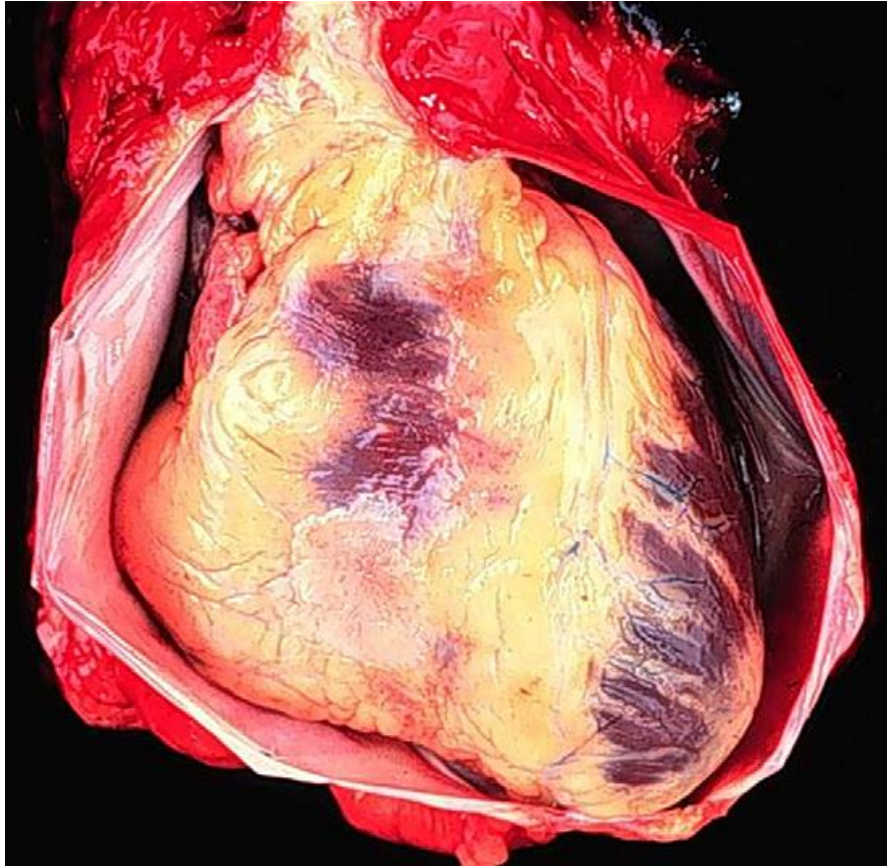


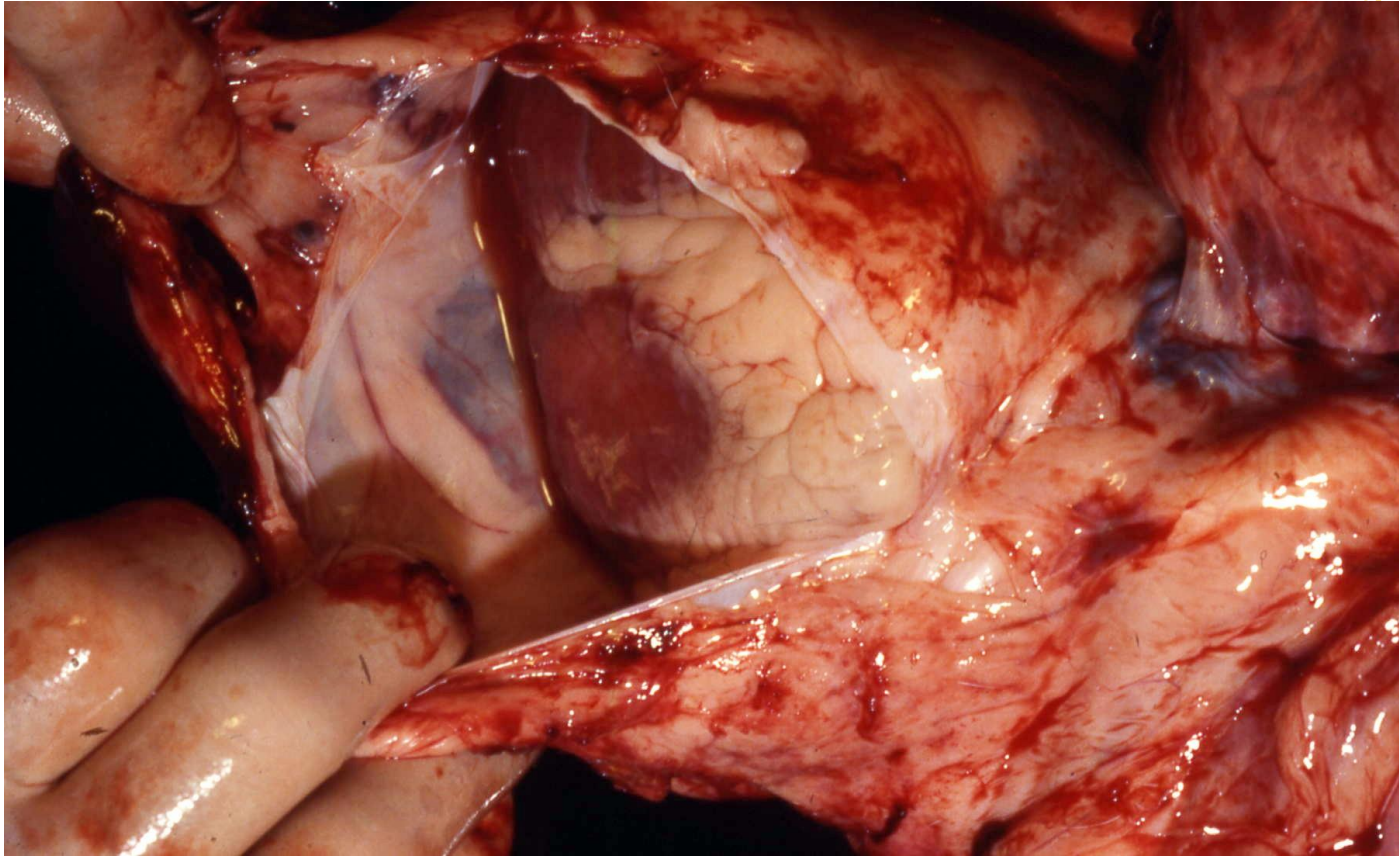


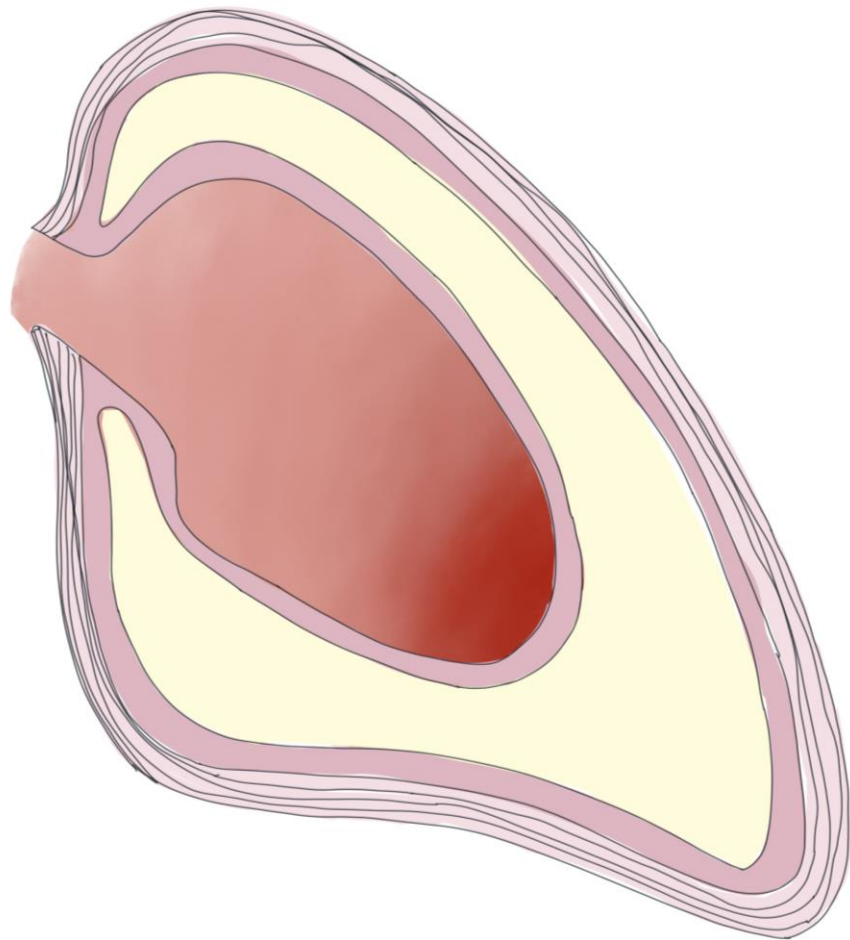


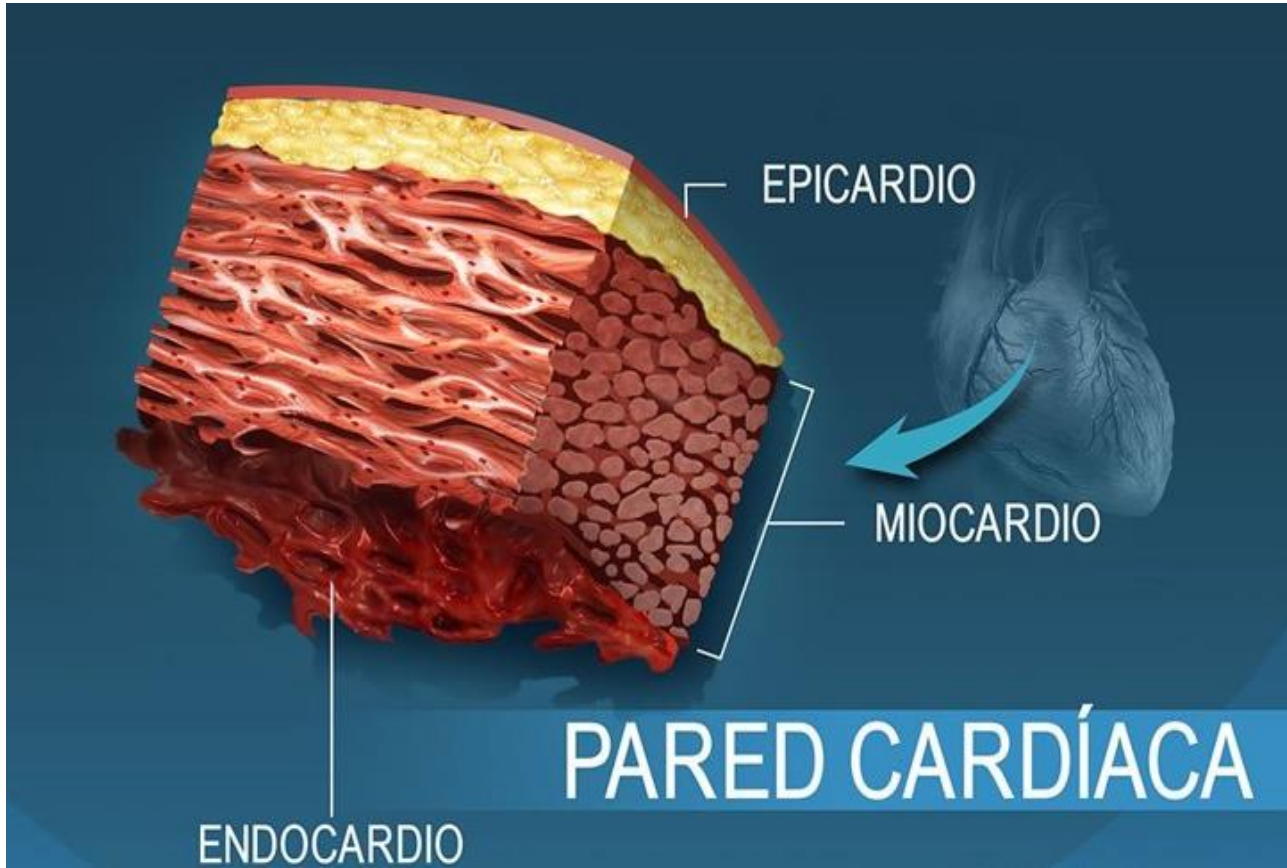
CONFORMACIÓN EXTERNA

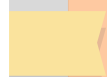
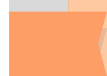


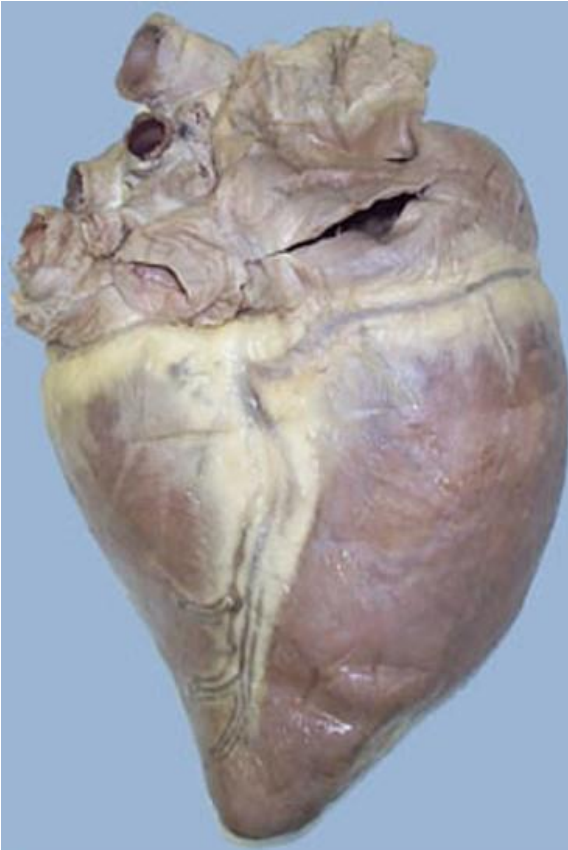












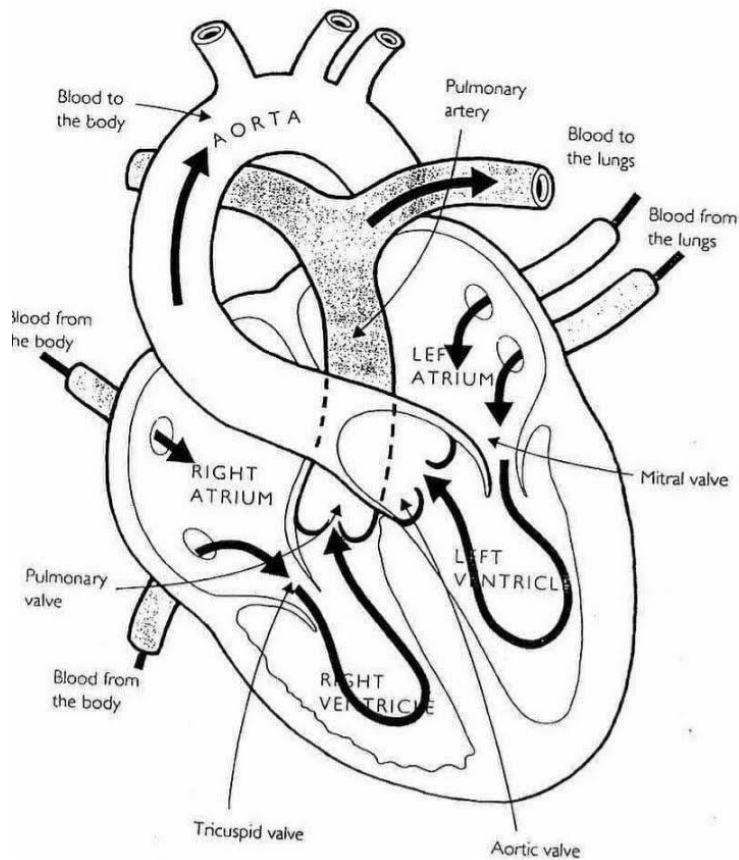
CARA DERECHA



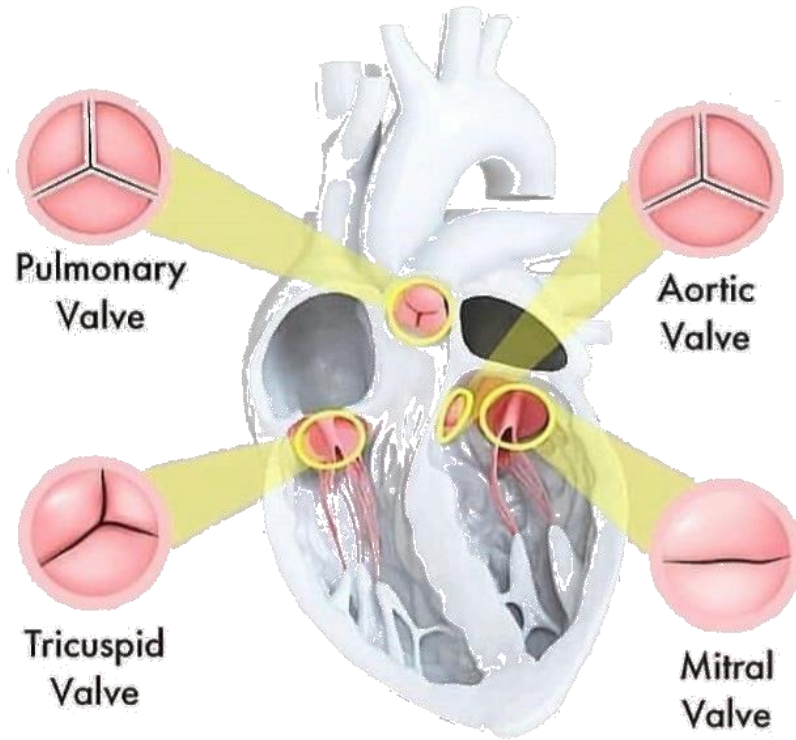
CARA IZQUIERDA



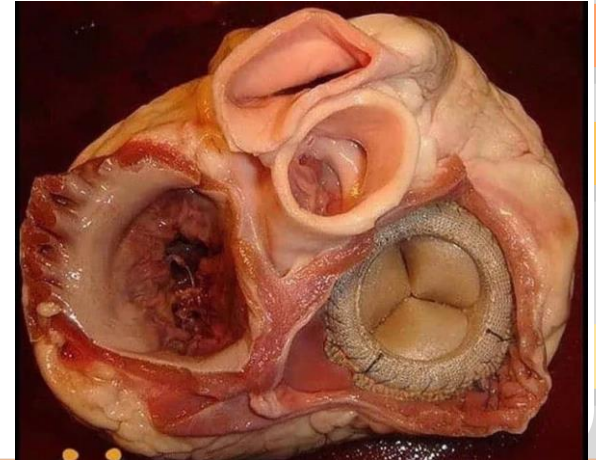
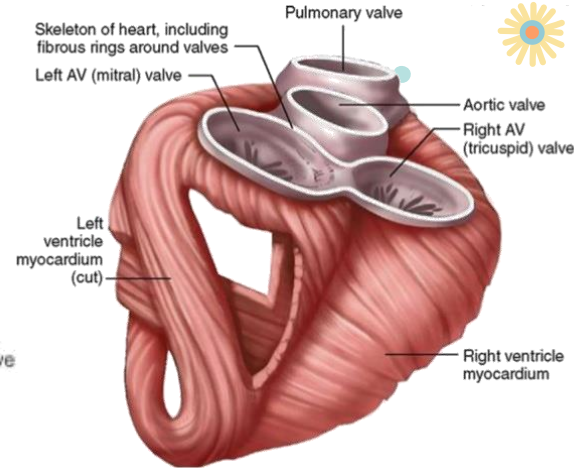
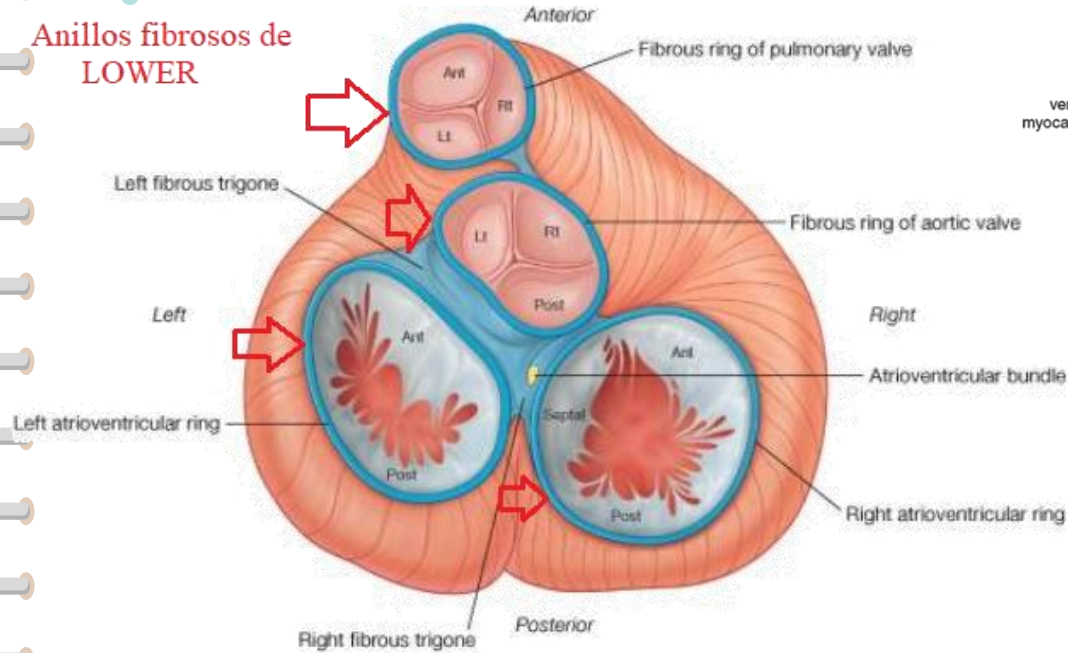
CONFORMACIÓN INTERNA

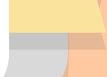
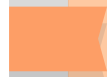
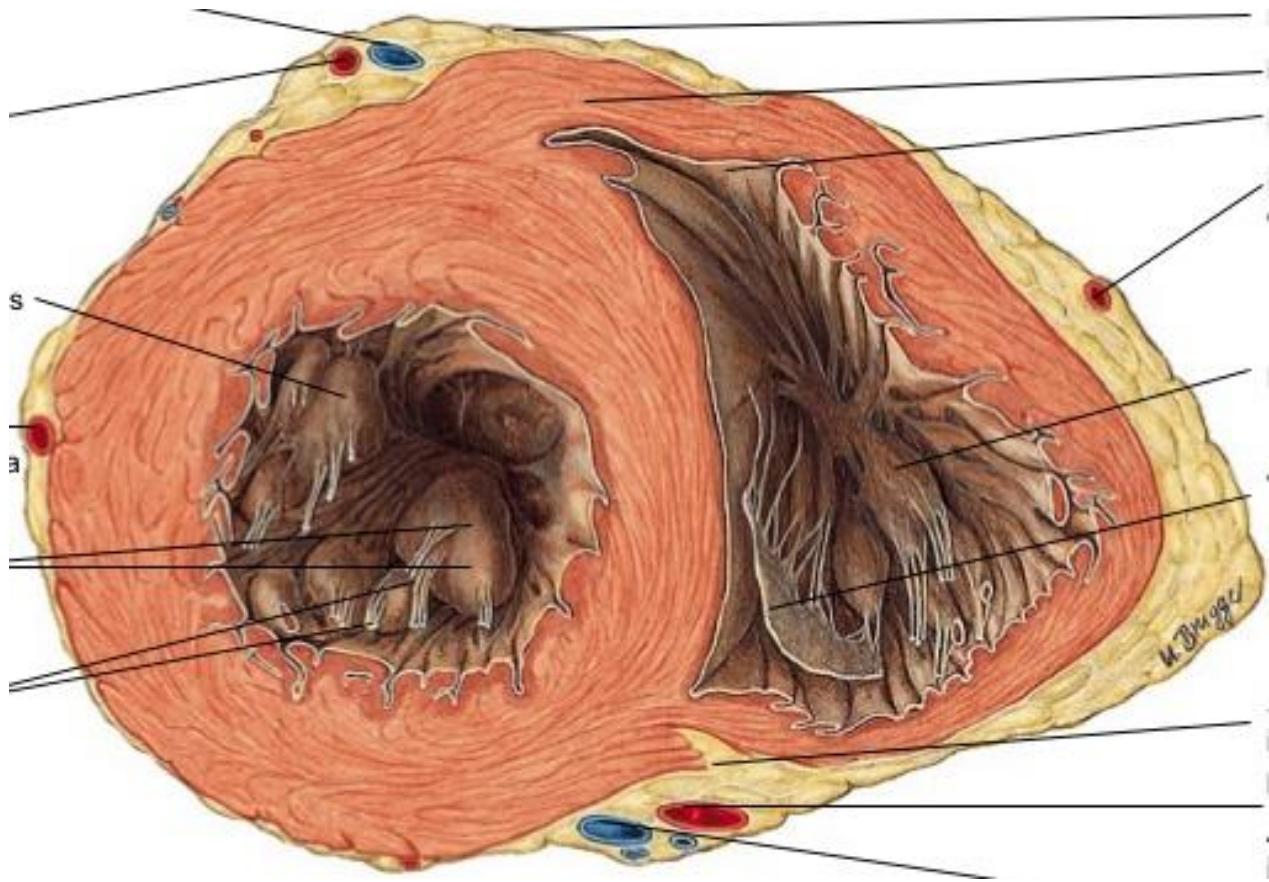


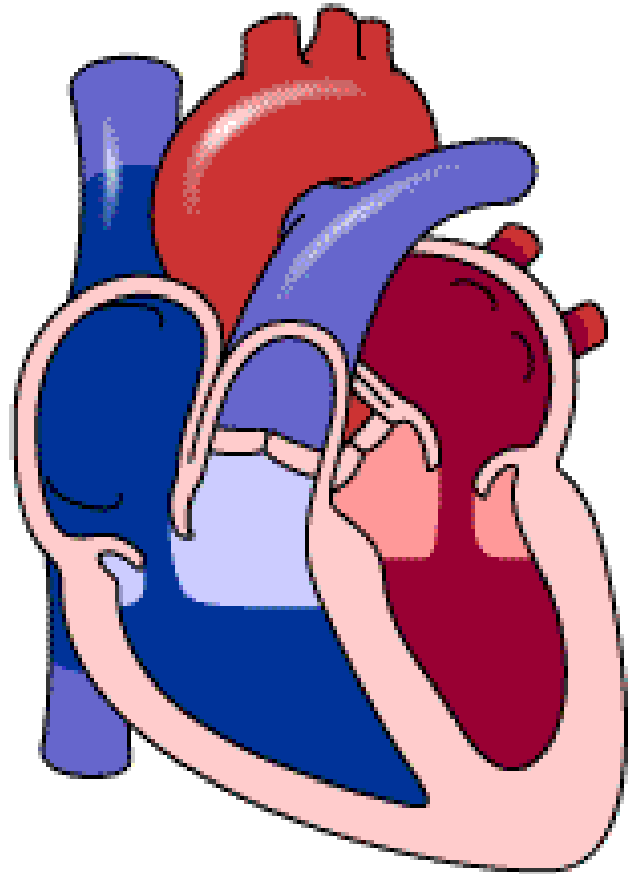
VÁLVULAS DEL CORAZÓN

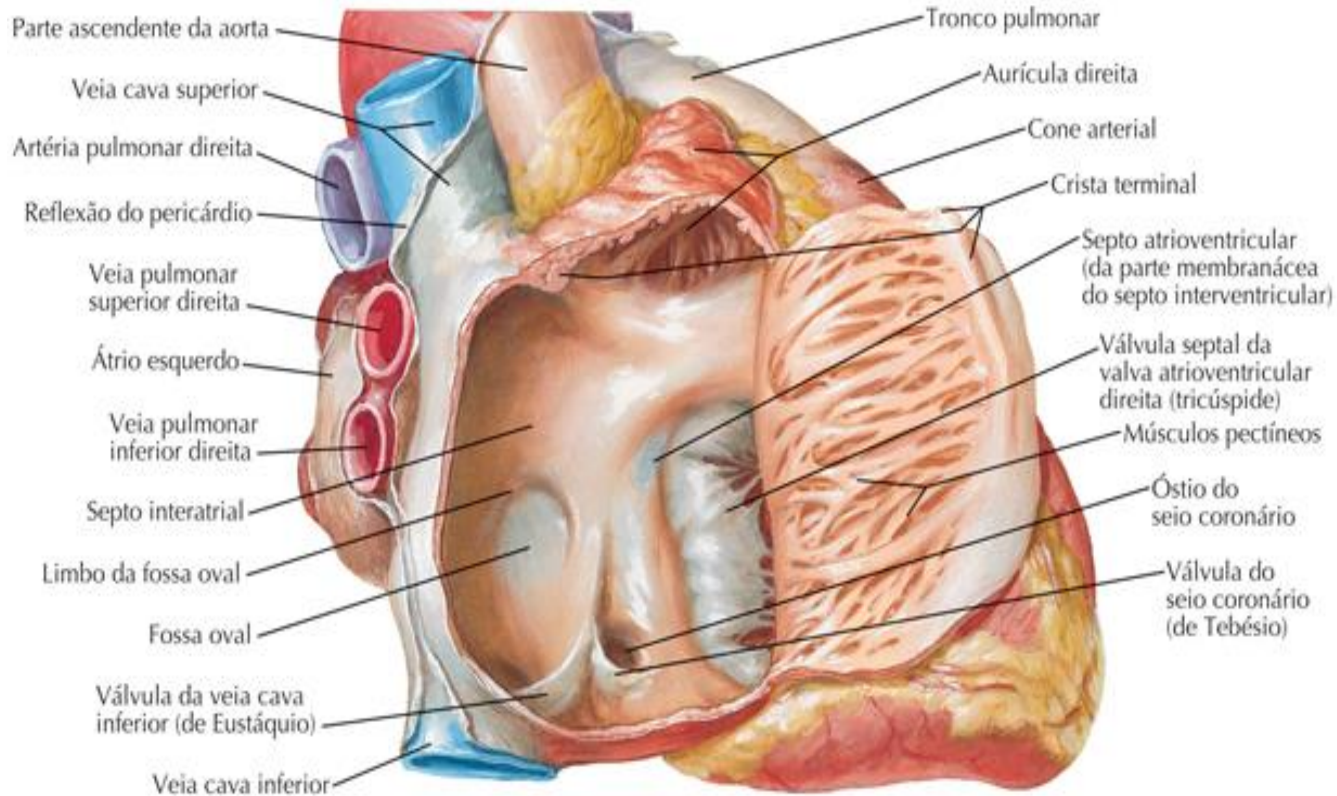


Anillos fibrosos de LOWER

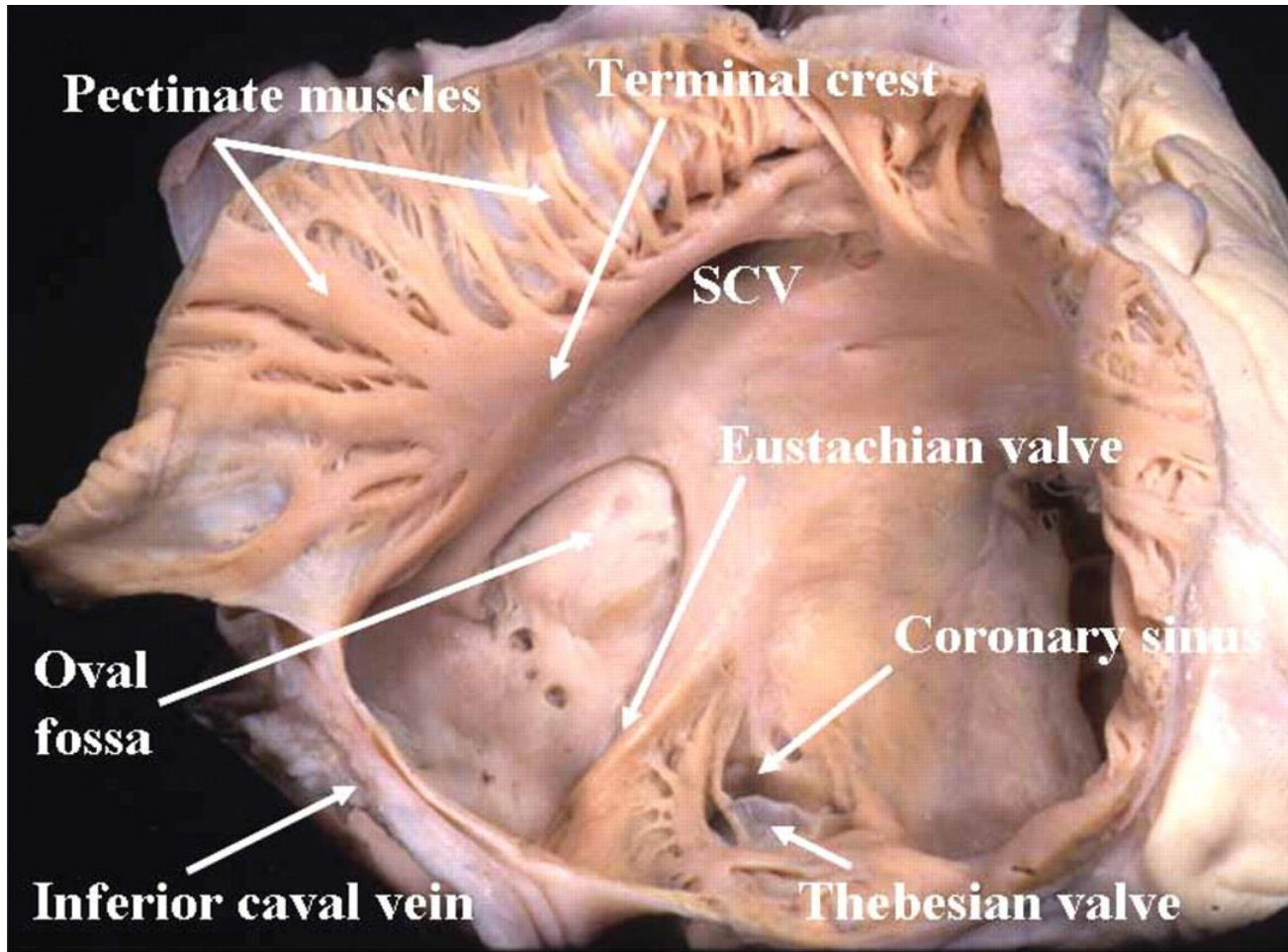


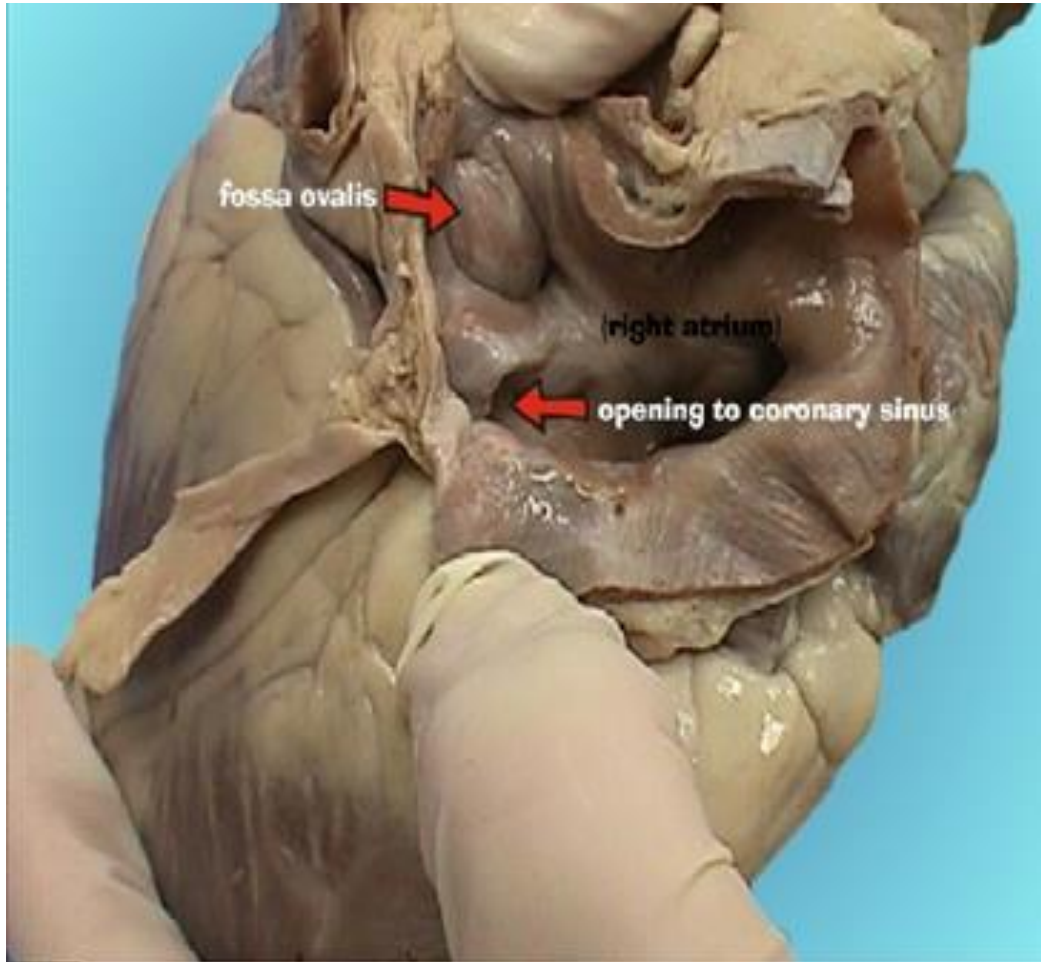






Átrio direito aberto: vista lateral direita



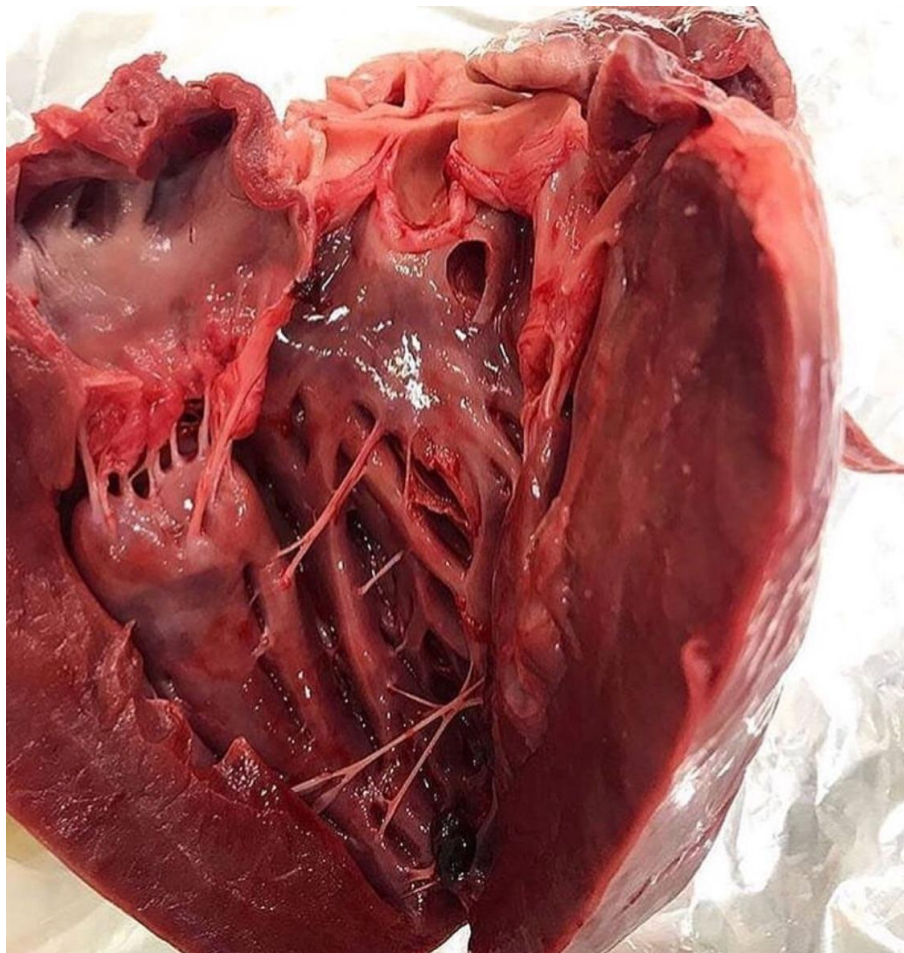


fossa ovalis

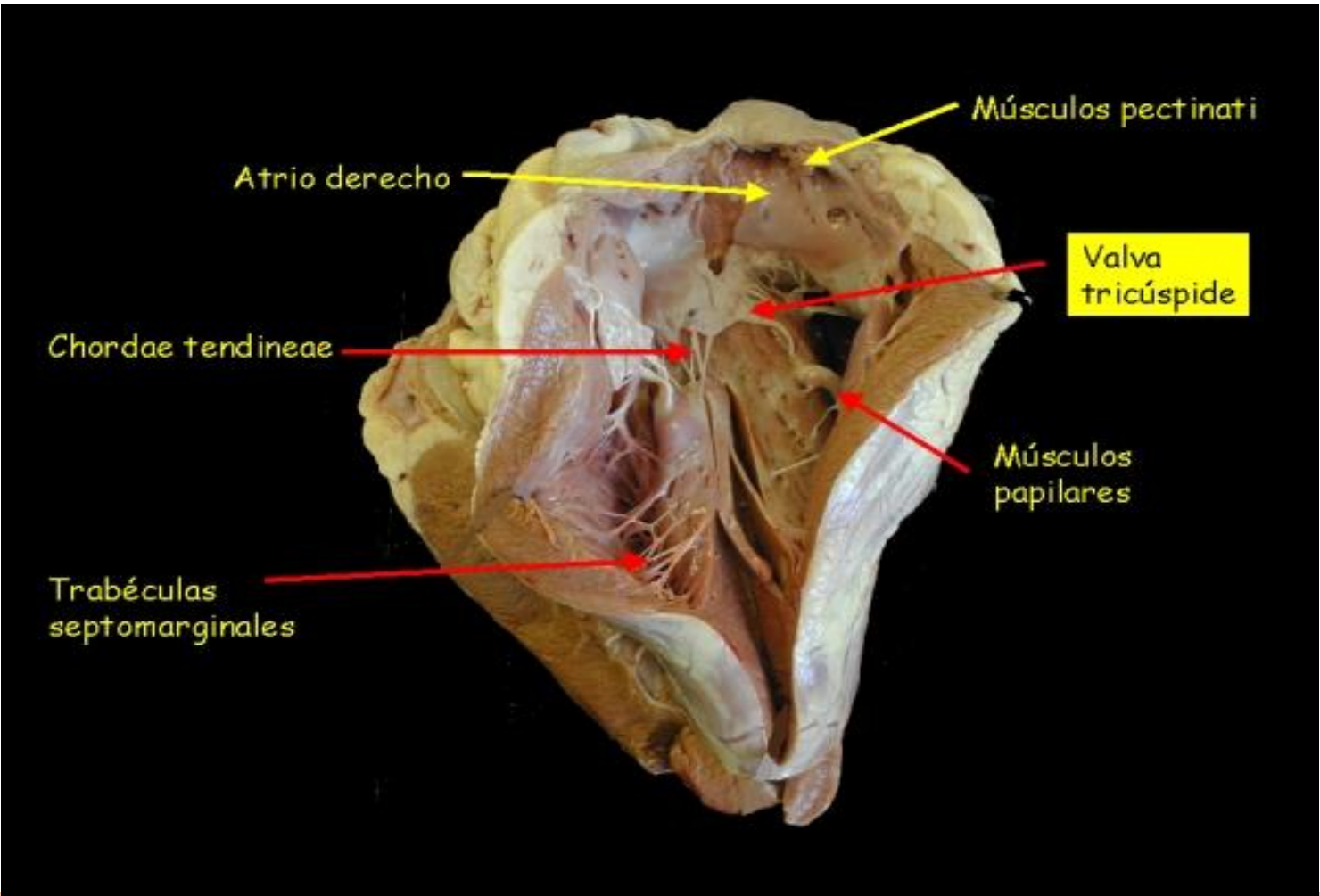
(right atrium)

opening to coronary sinus









Atrio derecho

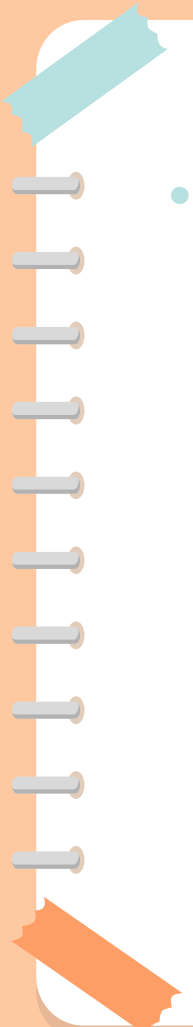
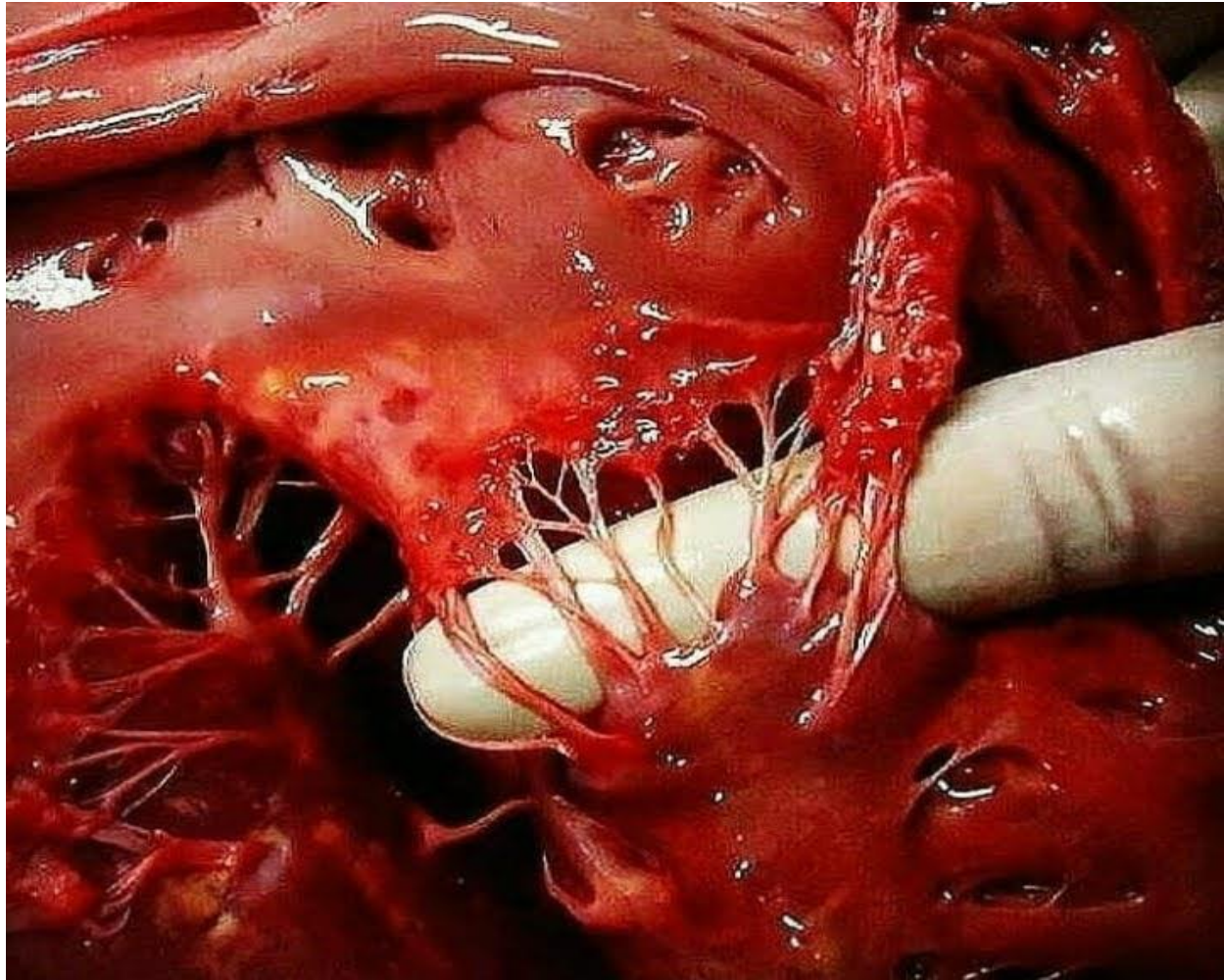
Músculos pectinati

Valva tricúspide

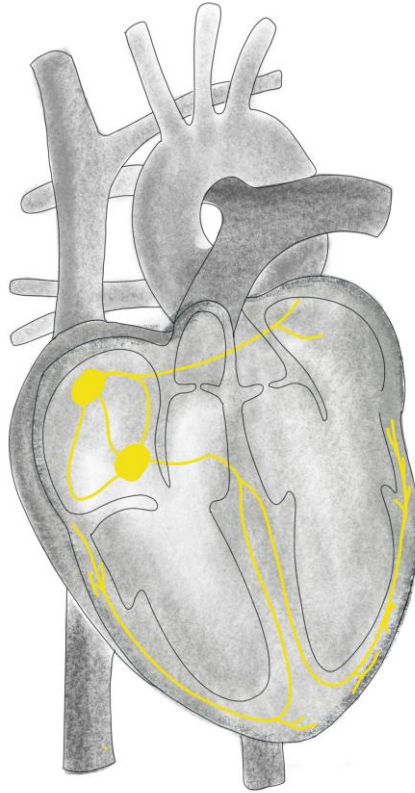
Chordae tendineae

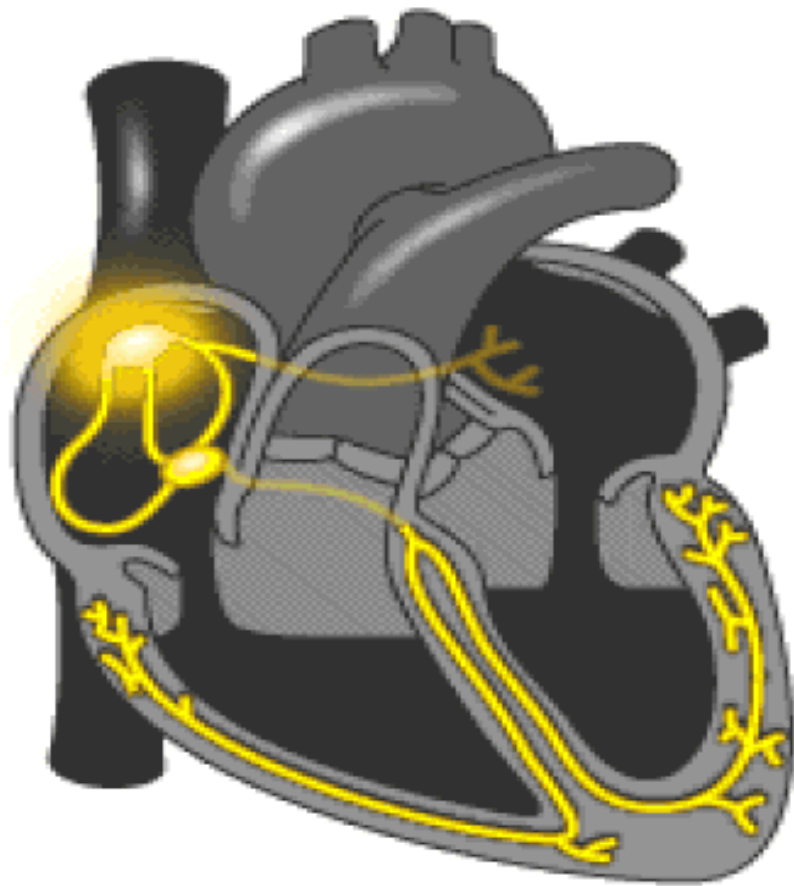
Músculos papilares

Trabéculas septomarginales



SISTEMA EXCITO-CONDUCTOR.

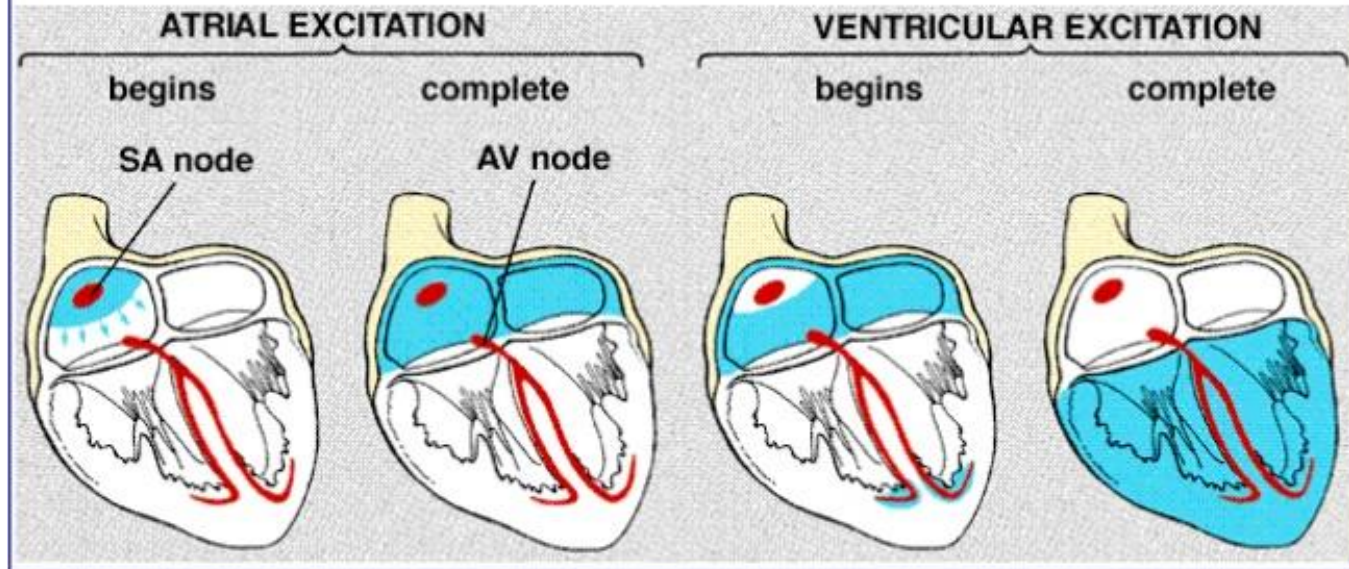




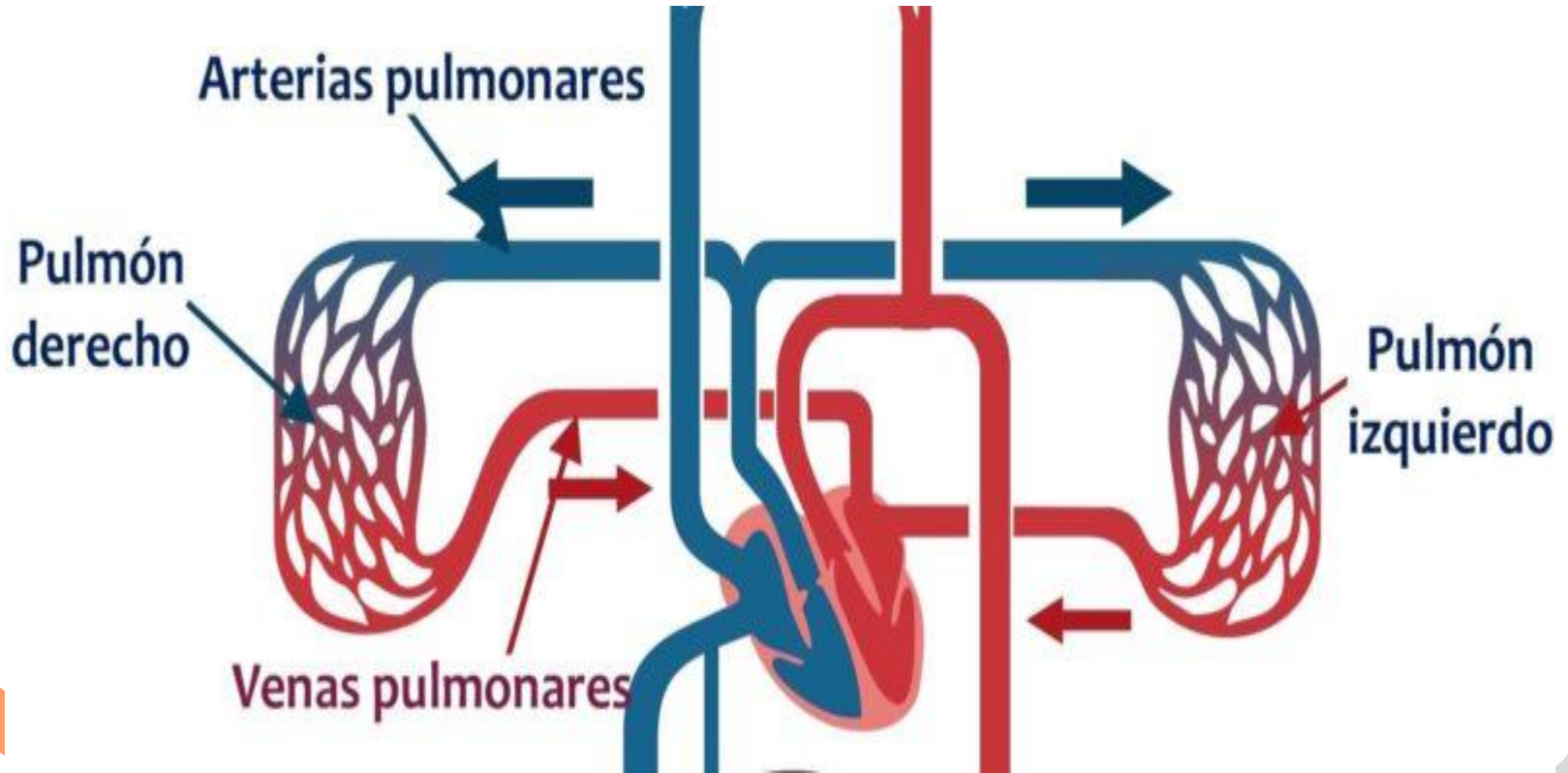
Sistema de Conducción Cardíaca



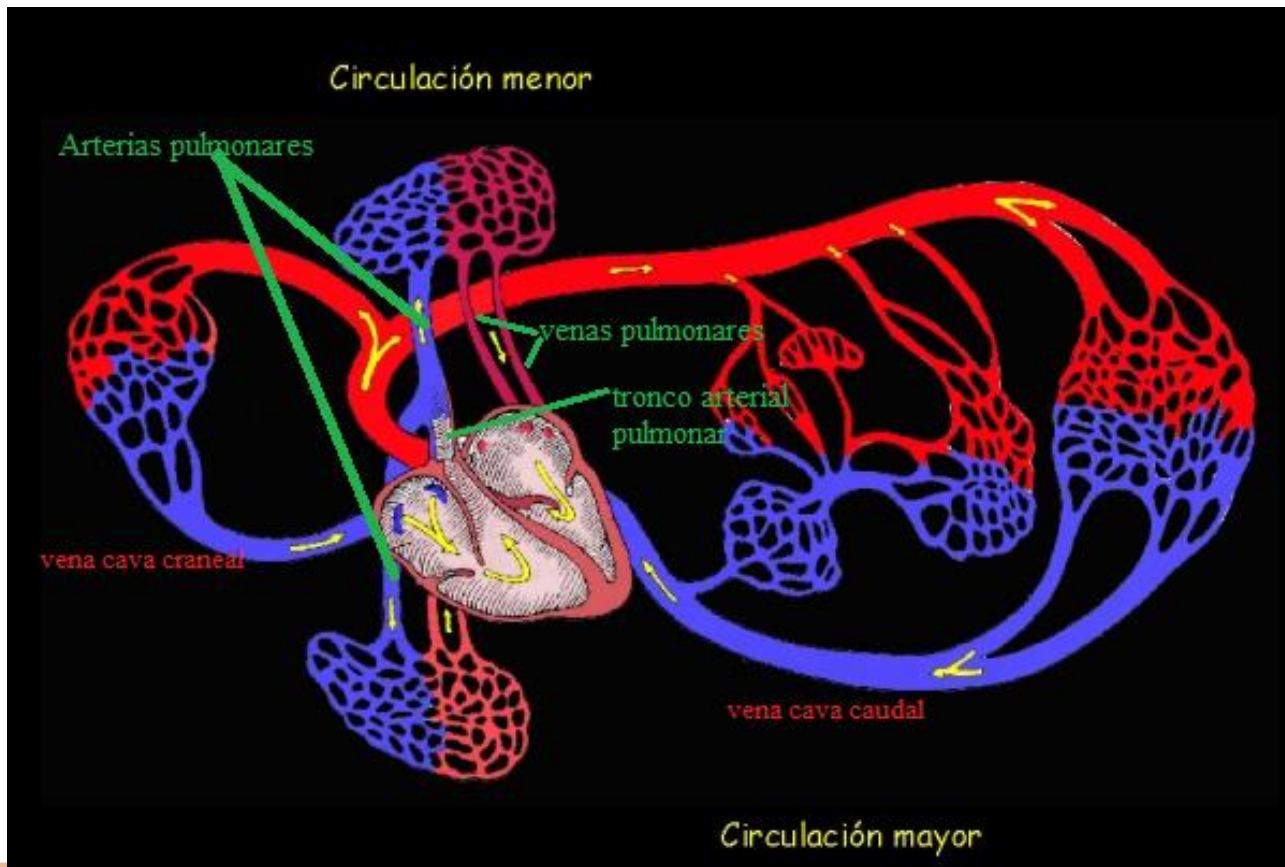
Atrial and Ventricular Excitation



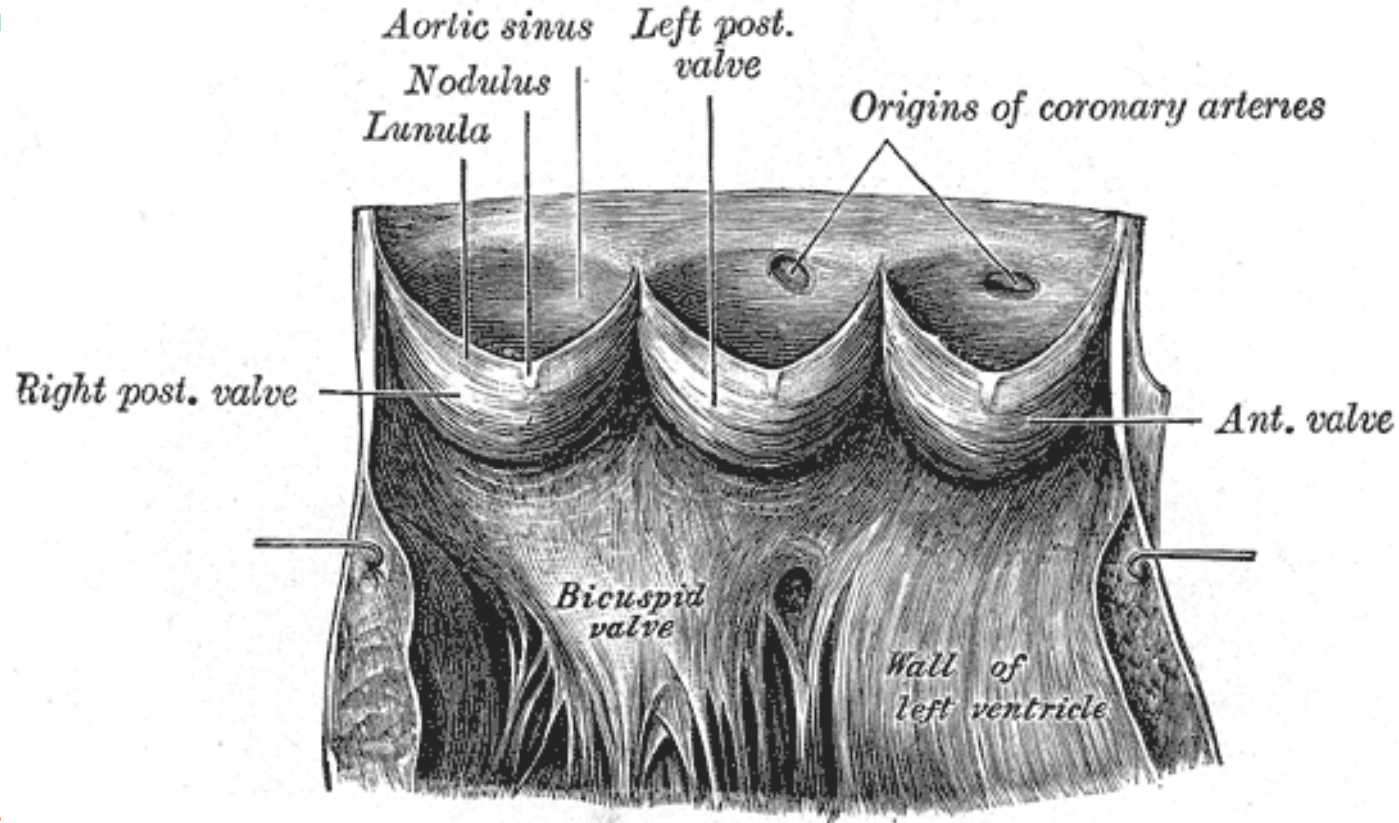
ANATOMÍA CIRCULATORIA Y EMERGENCIAS DEL CORAZÓN

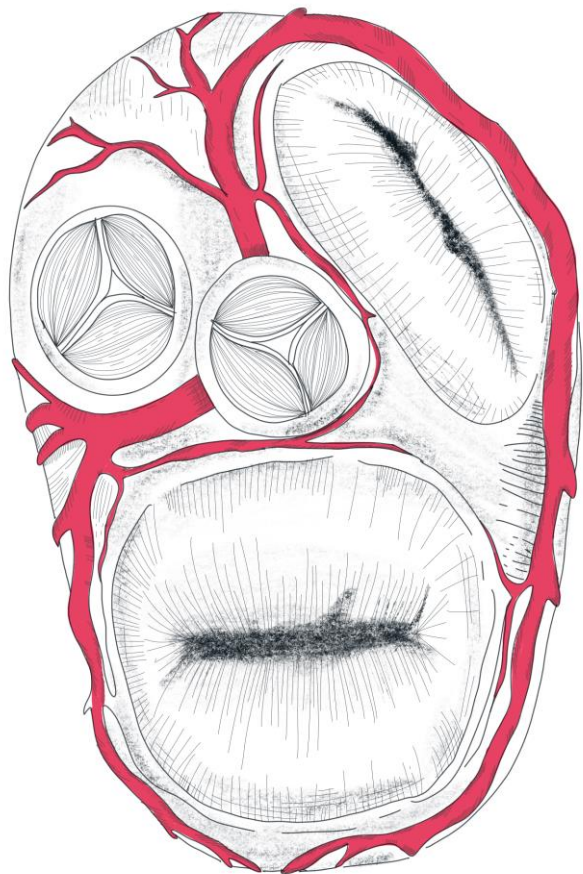


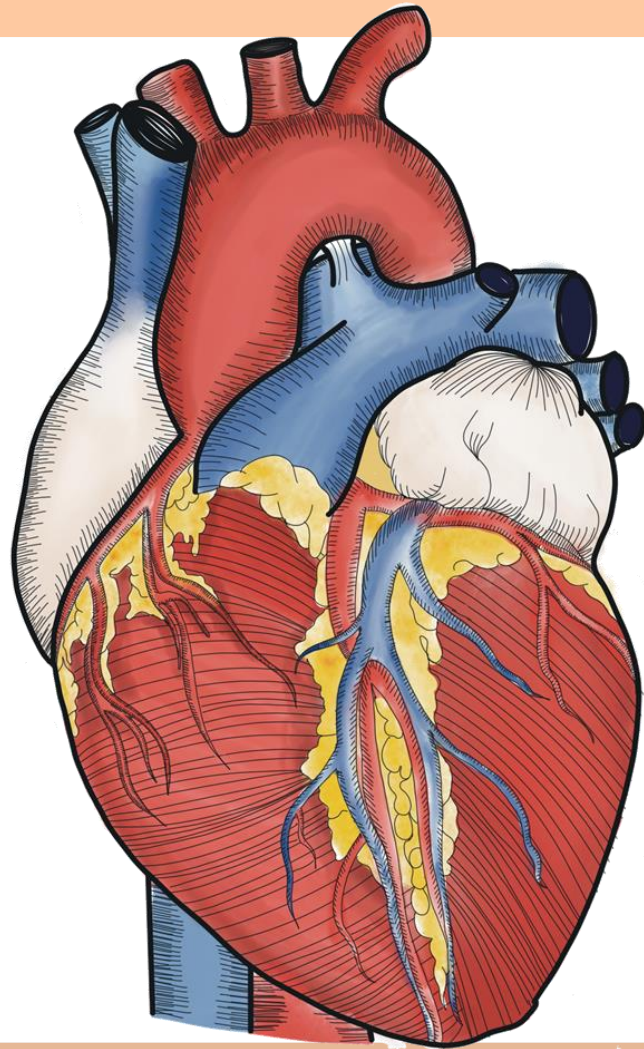
CIRCULACIÓN MAYOR Y MENOR

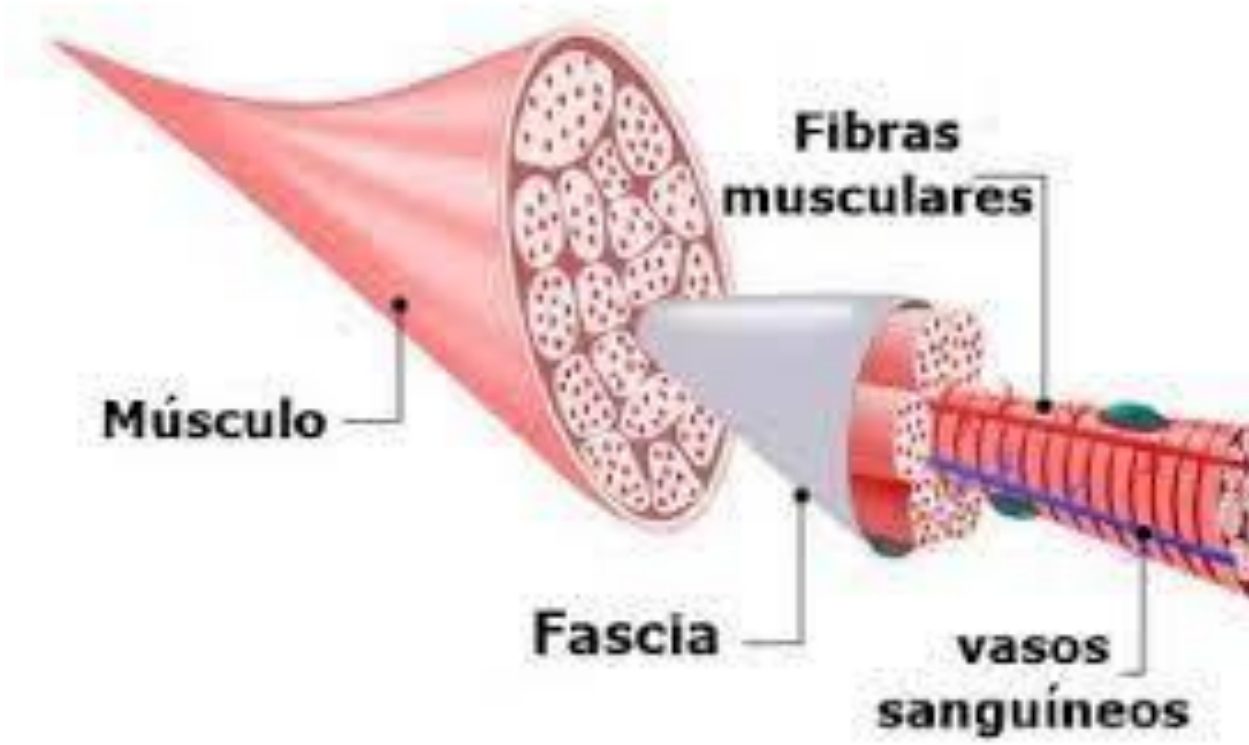


CIRCULACIÓN INTRÍNSECA







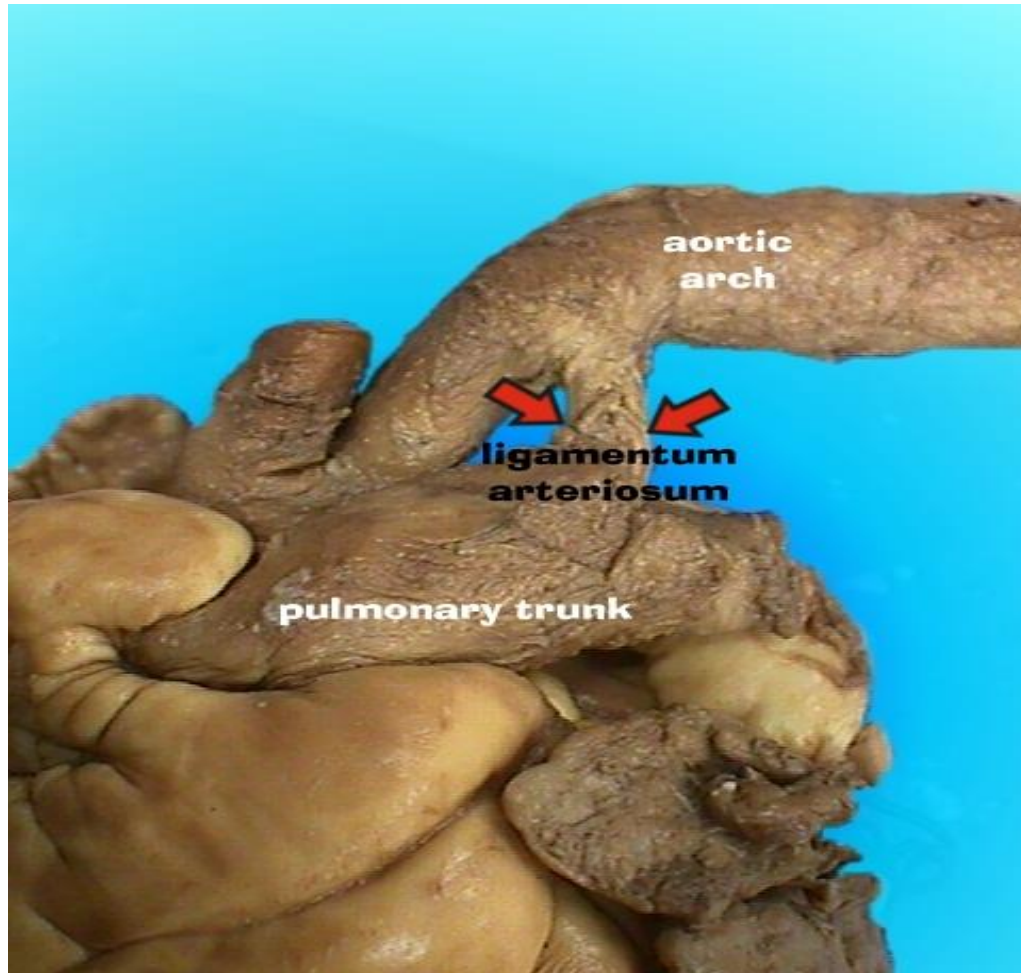


Músculo

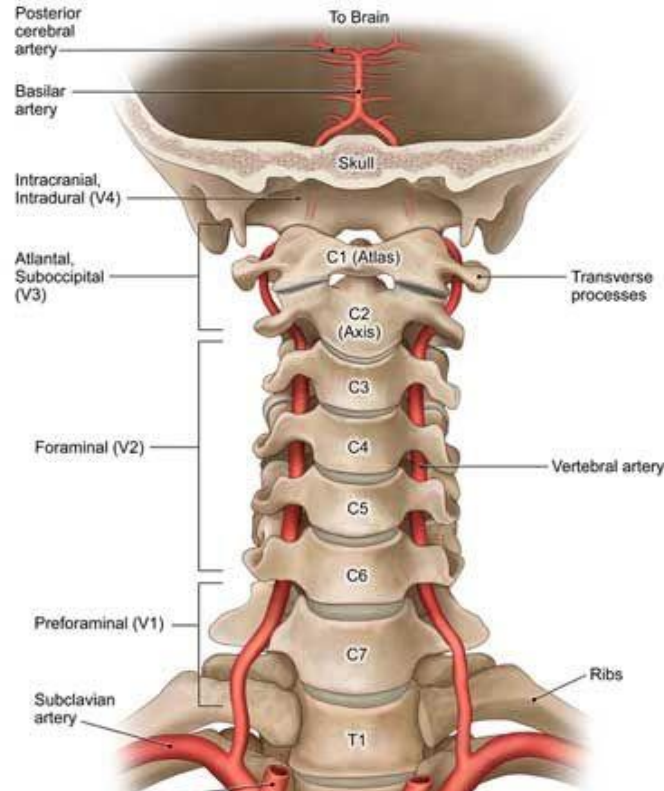
Fibras musculares

Fascia

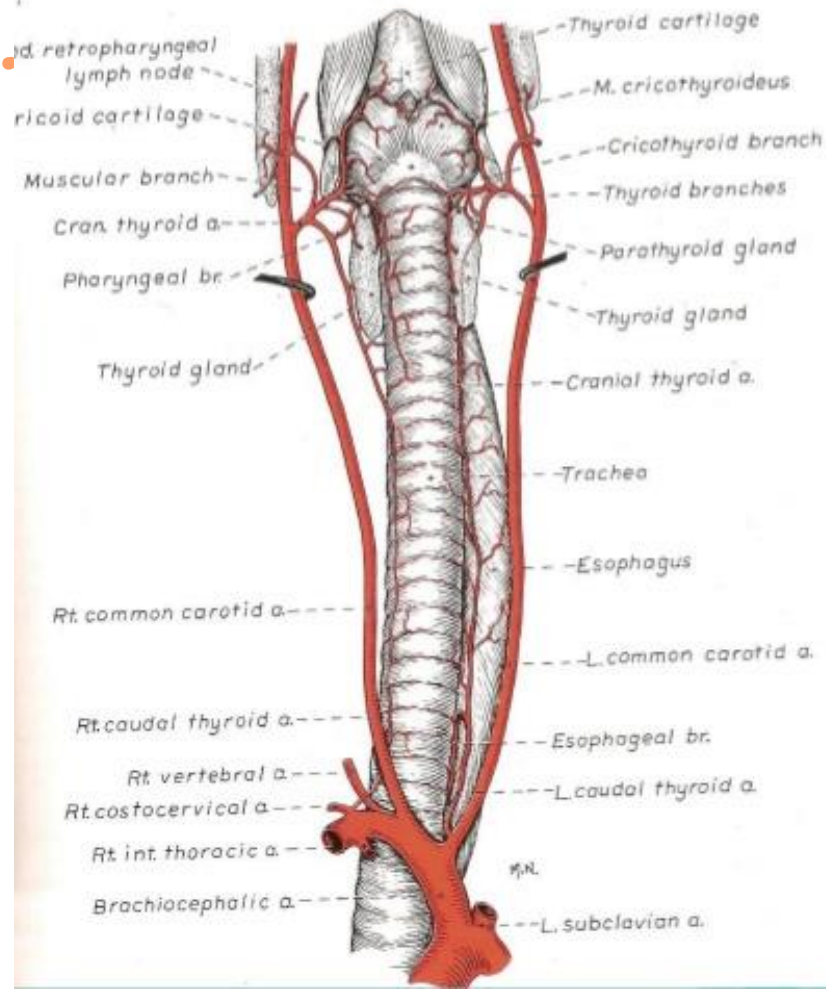
vasos sanguíneos



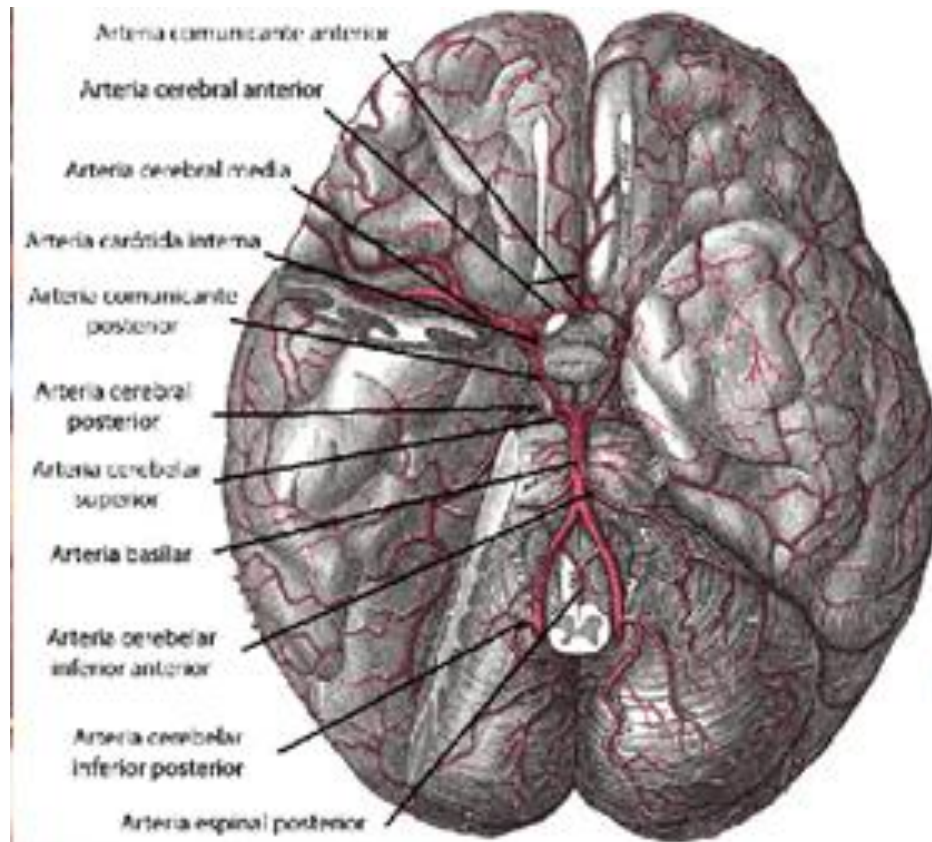
Vertebral Arteries



THESE IMAGES ARE COPYRIGHTED
BY ANICUS VISUAL SOLUTIONS.
COPYRIGHT LAW ALLOWS A \$150,000
PENALTY FOR UNAUTHORIZED USE.
CALL 1-877-303-1952 FOR LICENSE.



**Arteria carótida común.
 Vista ventral**



Carótida externa

gran
auricular

parotidea

Temporal
superficial

maxilar

Auriculares: lateral, intermedia, medial y profunda, ramas musculares y glandulares y estilomastoidea

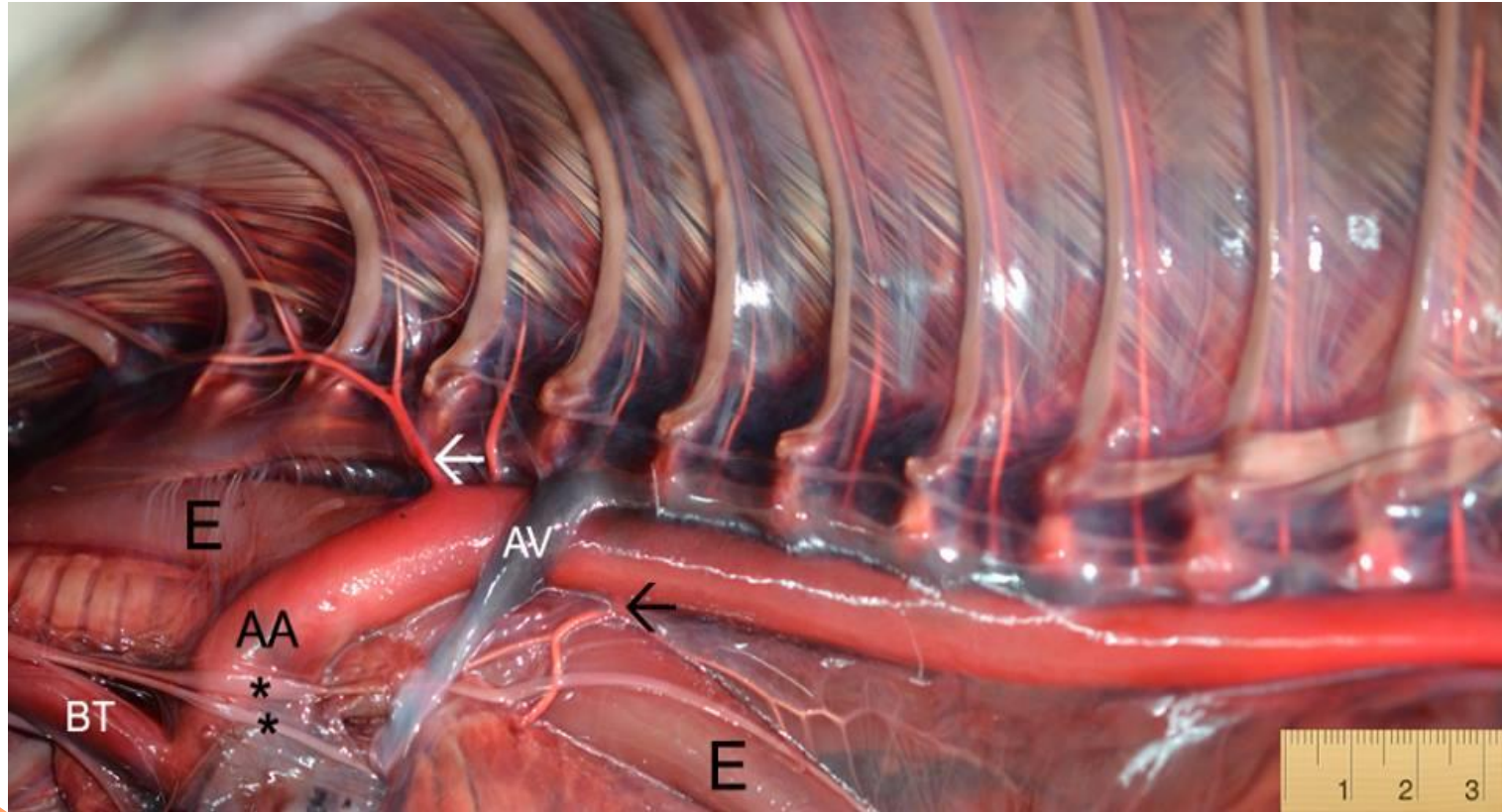
Masetérica, transversa facial, auricular rostral, temporal dorsal y palpebral ventral

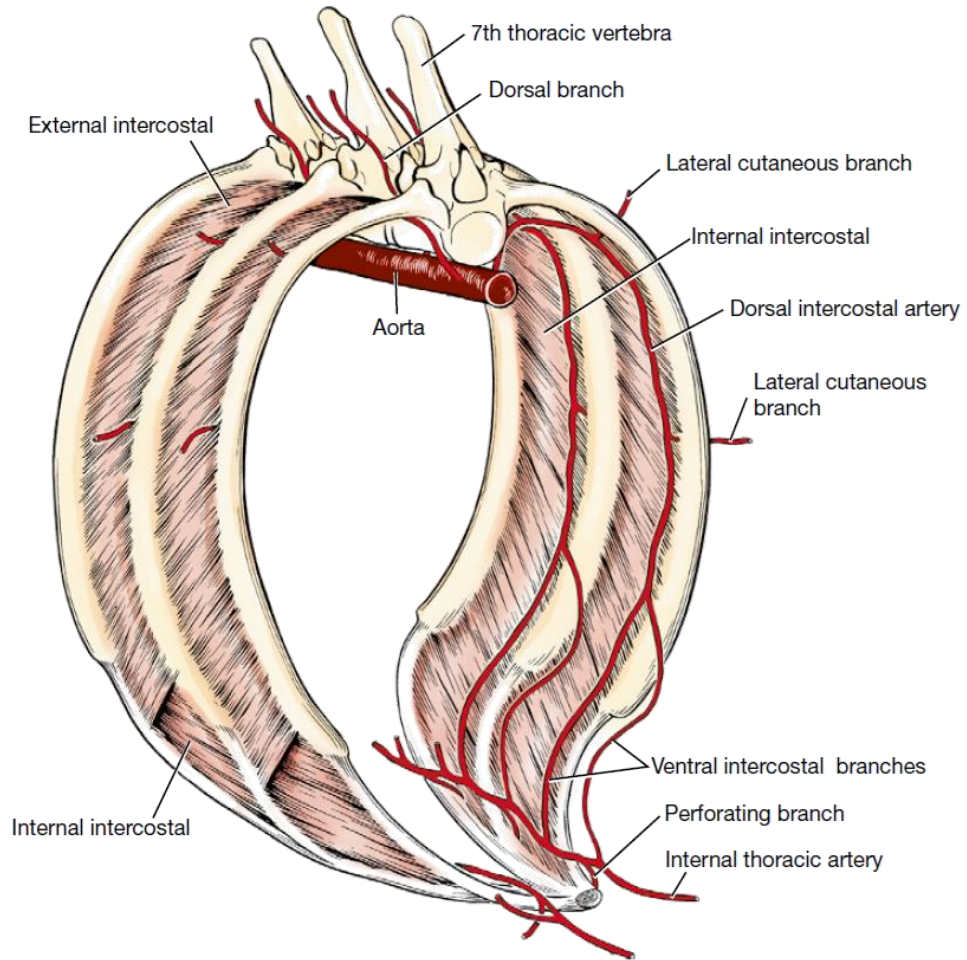
- **Porción mandibular:** alveolomandibular, temporal profunda caudal, timpánica, meningea media, ramas pterigoideas y mandibulares.
- **Porción pterigoidea:** no da ramas
- **Porción pterigopalatina:** orbitaria, temporal profunda rostral, bucinatoria, palatina menor e infraorbitaria y un tronco para la palatina mayor y la esfenopalatina

Carótida interna

Cerebrales: rostral, media y caudal y comunicante caudal: polígono de Willis

AORTA TORÁXICA





Aorta abdominal

Ramas Parietales:

- A. Lumbares (Pares)
- A. Frénico-abdominal (Izquierda y derecha)
- A. Circunflejas iliacas profundas (izquierda y derecha)

Ramas Viscerales:

- A. Celiaca (impar)
- A. Mesenterica craneal (impar)
- A. Renales
- A. Gonadales
- A. Mesenterica caudal

